

# SOFREL PCWin2

SCADA system for remote control and monitoring of telemetry networks



# SOFREL PCWin2: supervision that meets THE **DAILY CHALLENGES** FACED BY UTILITIES

**The SOFREL PCWin2 telemetry and SCADA supervisor is entering a new era..**

With the migration of communication media towards all-IP and the development of communicating sensors, water networks and energy installations are becoming increasingly connected and generate more and more data to be analysed on a daily basis.

The installation of a supervision solution is now essential for any operator wishing to effectively manage and monitor their network remotely.

SOFREL PCWin2 has been designed to meet this challenge and allows operators to easily get to grips with a supervision solution to better handle data and effectively manage the performance of their network.



DEVELOPMENT OF COMMUNICATIONS  
**TOWARDS ALL-IP**



## CENTRALISATION OF DATA



## ADAPTABILITY TO WATER AND HVAC MARKETS



## SECURE SHARING OF DATA



## OPENING TO THIRD-PARTY APPLICATIONS



# SOFREL PCWin2: simple and effective supervision TO MANAGE AND MONITOR A TELEMETRY NETWORK

The use of the SOFREL PCWin2 Scada system offers many advantages to operators:



- **Centralisation** of all data sent by devices
- **Data processing** and storage
- **Display** of the overall state of the network and each site controlled by dynamic and mimic mapping
- **Graphical analysis** of data by time or by business sector
- **Alarm management**
- **Data sharing** with other users or third-party applications

## PRODUCT BENEFITS

- **Remote management of sites**
- **Intuitive control and customisation of mimic views**
- **Access to all views and data via PC, tablet and smartphone**
- **Reduction of on-site operations**

### ANIMATED GRAPHIC MIMIC DIAGRAMS



- **Fully customisable view** with a large library of business symbols available
- **Display of animated components**
- **Displays of current digital values, suffixes, bar charts**
- **Data tables**
- **Control buttons**

### COMMUNICATION WITH REMOTE DEVICES



- **Compatibility with all ranges SOFREL**  
S4W, S4TH, S500, S500TH, BOX, LS/LT, etc.
- **2G/3G/4G Communication**, RTC, ADSL, Ethernet, internet, radio, etc.

## DATA PROCESSING



- **Advanced calculations** covering current values
- **Advanced calculations** covering archived values
- **Calculation** formulas

## CURVE CHARTS



- **Display of 1 to 6 curves** in a single view
- **Zoom** to adjust framing and scope
- **Time lag** to track information over different time periods
- **Export of curve points** to Excel

## OPERATION REPORTS



- **Automatic data export** in Excel
- **Periodic generation of reports** (days, weeks, months, etc.)
- **Inserting totals** into rows and columns
- **Automatic email distribution**

## MANAGEMENT OF ALARMS AND STAND-BY DUTIES



- **Annual schedules** for assignment of stand-by duties
- **Weekly** recipient call sequence **calendars**
- **Alarm transmission**
- **Logging of alarms, calls and acknowledgements**



## ANDROID APP



### SOFREL Smart PCWin

download from Google Play

- **Viewing and acquisition of alarms**
- **Viewing current data statuses**
- **Positioning and modification of instructions**
- **Triggering of equipment queries**

# SOFREL PCWin2: a new business analysis module FOR DATA PROCESSING PURPOSES

## DYNAMIC MAPPING



- Network **overview**
- **GPS tracking** of equipment
- **Importing layers** for displaying installations and areas
- **Data display** by geographical area and business analysis
- **Immediate access** to site data and summaries

## BUSINESS ANALYSIS TABLES



- **Instantly compare** the performance of your sites
- **Identification of points of malfunction** or under-performance
- **Act on one or more instructions** regarding a piece of equipment
- **Go directly to the list of information** and mimic diagram of a system to perform an investigation
- **Share data** from a business analysis

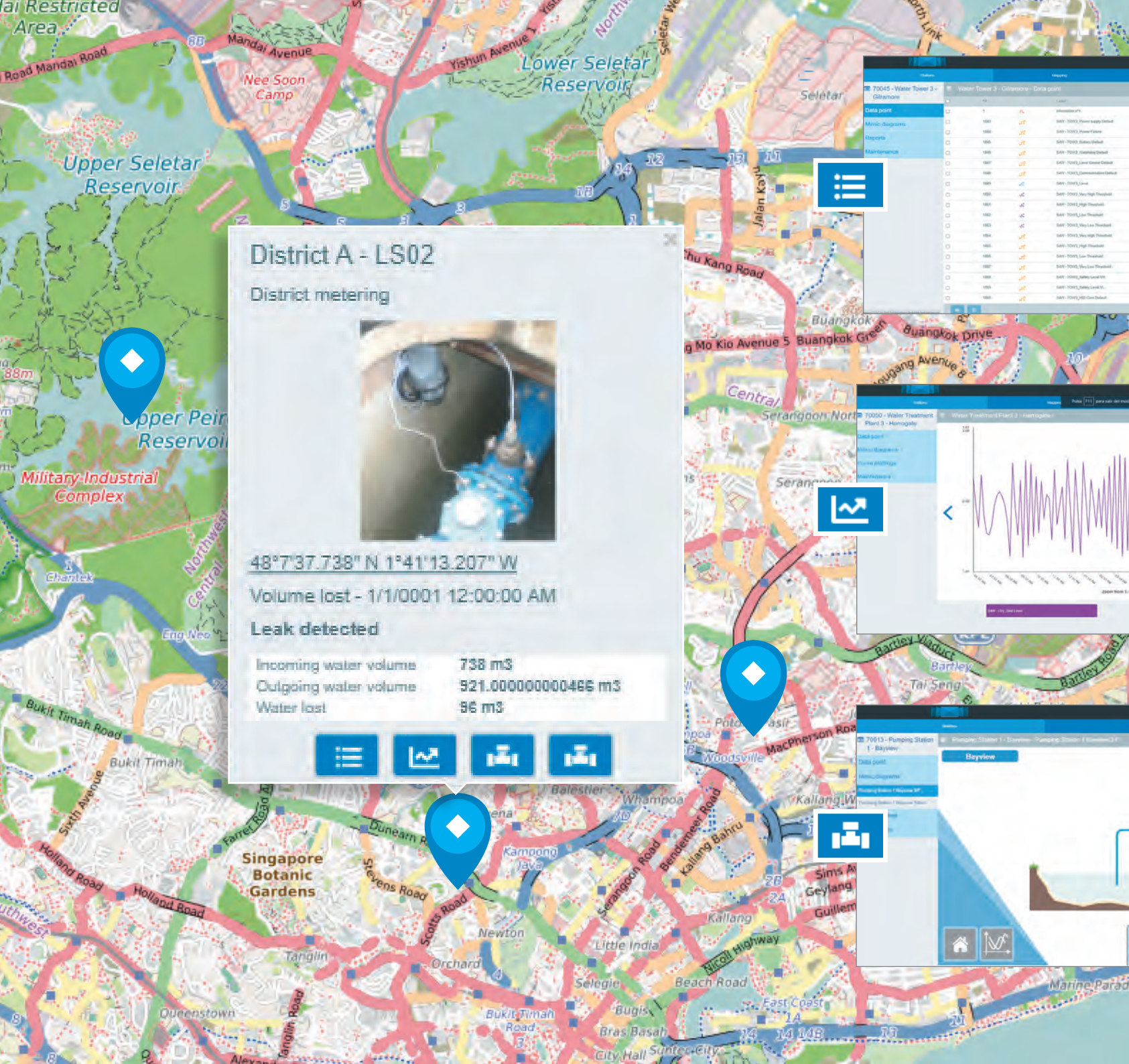
## PRODUCT BENEFITS

- The user is able to fully customise the business views of their choice
- Type of business analyses
- Choice of indicators
- Immediate action regarding these indicators

European patent  
application  
(EP20176925.4)

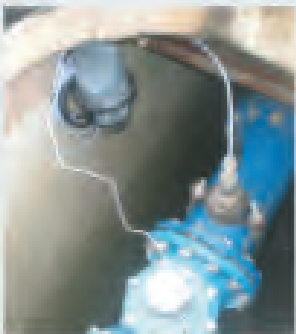
The screenshot shows the Sofrel PCWin2 software interface. On the left, there is a map view showing a geographical area with various locations marked. On the right, there is a data table titled 'Vue générale - Surveillance Poste de Relèvement'. The table has columns for 'Station', 'Origine', 'Volume pompé total', 'Débit Pompe 1', 'Débit Pompe 2', 'Temps de fonctionnement P1', 'Temps de fonctionnement P2', and 'Débit entrain calculé'. The table lists various stations and their corresponding data values.

Station	Origine	Volume pompé total	Débit Pompe 1	Débit Pompe 2	Temps de fonctionnement P1	Temps de fonctionnement P2	Débit entrain calculé
PR_A_Aphonsa_Guadix	PR_Aphonsa_Guadix	103693.62 m3	DEFAULT	DEFAULT	2673.34 h	2667.77 h	26.00 m3/h
PR_29_Arsenal_Rodon	PR_Arsenal_Rodon	102299.24 m3	Normal	Normal	2630.63 h	2602.21 h	32.63 m3/h
PR_16_Beaucou	PR_Beaucou	104228.72 m3	Normal	Normal	2660.53 h	2627.40 h	29.47 m3/h
PR_16_Boungard	PR_Boungard	105376.51 m3	Normal	Normal	2642.48 h	2679.36 h	27.44 m3/h
PR_5_Boungard-Evesque	PR_Boungard-Evesque	101944.13 m3	DEFAULT	Normal	2619.66 h	2600.64 h	28.42 m3/h
PR_8_Boungard	PR_Boungard	102600.04 m3	Normal	Normal	2619.30 h	0.00 h	25.52 m3/h
PR_1_Centre_Rennes	PR_Centre_Rennes	107544.36 m3	DEFAULT	Normal	245.57 h	2704.11 h	30.64 m3/h
PR_7_Clevoisy	PR_Clevoisy	106524.72 m3	Normal	Normal	2707.00 h	2630.41 h	25.02 m3/h
PR_8_Clevoisy	PR_Clevoisy	106281.87 m3	Normal	Normal	2681.51 h	2675.64 h	25.46 m3/h
PR_11_Gayathie	PR_Gayathie	106479.25 m3	Normal	Normal	2668.02 h	2764.61 h	25.47 m3/h
PR_14_Joazeux_d'Arc	PR_Joazeux_d'Arc	101189.36 m3	Normal	Normal	2672.26 h	2622.94 h	25.92 m3/h
PR_15_La_Brière	PR_La_Brière	102794.78 m3	Normal	Normal	2609.64 h	2699.59 h	25.12 m3/h
PR_16_Lange-Champs	PR_Lange-Champs	177116.18 m3	Normal	Normal	2636.57 h	2664.76 h	25.27 m3/h
PR_12_Mauriquet	PR_Mauriquet	105326.56 m3	Normal	Normal	2600.00 h	2664.76 h	25.47 m3/h
PR_11_Patton	PR_Patton	170846.90 m3	Normal	Normal	2648.71 h	2616.46 h	23.67 m3/h
- Volume pompé total -			Débit Pompe 1	Débit Pompe 2	Temps de fonctionnement P1	Temps de fonctionnement P2	Débit entrain calculé
Maximum: 188479.25			Total à Total 1	Total à Total 1	Maximum: 2707.00	Maximum: 2764.61	Maximum: 32.63
Minimum: 170846.90					Minimum: 245.57	Minimum: 2600.64	Minimum: 17.54
Moyenne: 103413.62					Moyenne: 2544.27	Moyenne: 2699.74	Moyenne: 25.02
Total: 3668275.81					Total: 56855.30	Total: 49974.06	Total: 569.49



### District A - LS02

District metering







48°7'37.738" N 1°41'13.207" W

Volume lost - 1/1/0001 12:00:00 AM

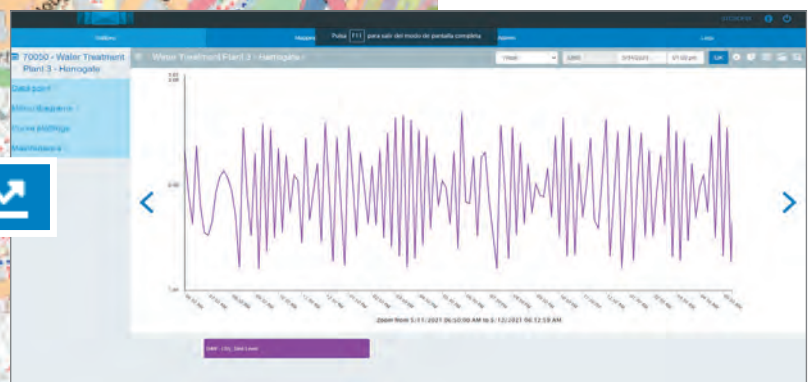
**Leak detected**

Incoming water volume	738 m3
Outgoing water volume	921.000000000466 m3
Water lost	96 m3



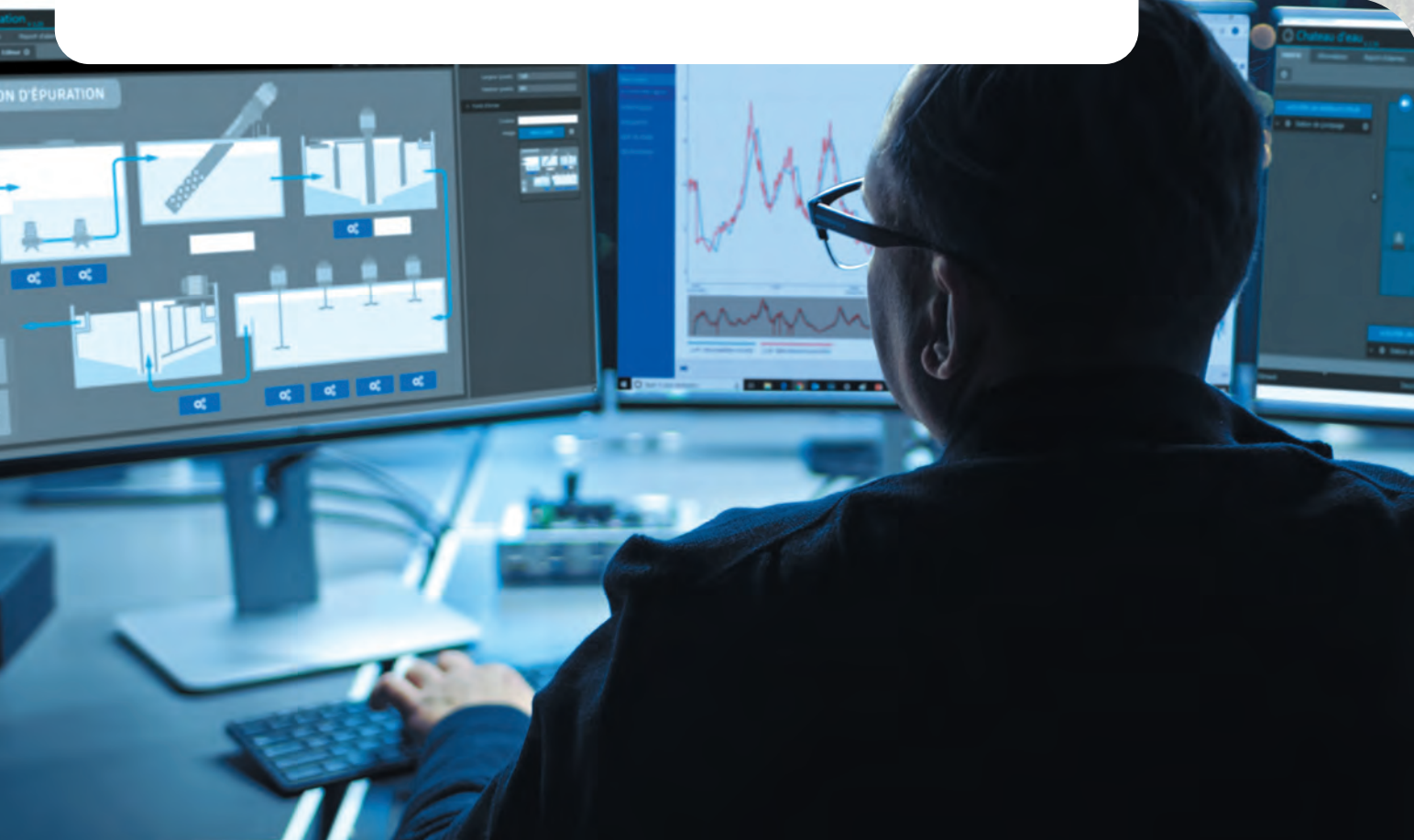


Water Tower 3 - Glenmore - Data point			
ID	Location	Date	Value
1540	SAR-15403_Power Supply Default	3/14/2021 11:40:00 AM	NAI
1541	SAR-15403_Power Phase	3/14/2021 11:40:00 AM	NAI
1542	SAR-15403_Status Default	3/14/2021 11:40:00 AM	000000
1543	SAR-15403_Status Default	3/14/2021 11:40:00 AM	000000
1544	SAR-15403_Low Water Default	3/14/2021 11:40:00 AM	NAI
1545	SAR-15403_Communication Default	3/14/2021 11:40:00 AM	NAI
1546	SAR-15403_Low	3/14/2021 11:40:00 AM	3.44
1547	SAR-15403_New High Threshold	3/14/2021 11:40:00 AM	2.00
1548	SAR-15403_High Threshold	3/14/2021 11:40:00 AM	2.00
1549	SAR-15403_Low Threshold	3/14/2021 11:40:00 AM	4.00
1550	SAR-15403_Mid Low Threshold	3/14/2021 11:40:00 AM	4.00
1551	SAR-15403_New High Threshold	3/14/2021 11:40:00 AM	NAI
1552	SAR-15403_High Threshold	3/14/2021 11:40:00 AM	NAI
1553	SAR-15403_Low Threshold	3/14/2021 11:40:00 AM	000000
1554	SAR-15403_Mid Low Threshold	3/14/2021 11:40:00 AM	000000
1555	SAR-15403_Status Default	3/14/2021 11:40:00 AM	NAI
1556	SAR-15403_Status Default	3/14/2021 11:40:00 AM	NAI
1557	SAR-15403_Status Default	3/14/2021 11:40:00 AM	NAI



# Opening to third-party applications TO SHARE TELEMETRY DATA

In addition to centralising data from SOFREL-branded equipment, the SOFREL PCWin2 supervisory programme also enables third-party solutions such as hypervisors or data analysis applications to retrieve all or part of its current information which is archived on a daily basis.



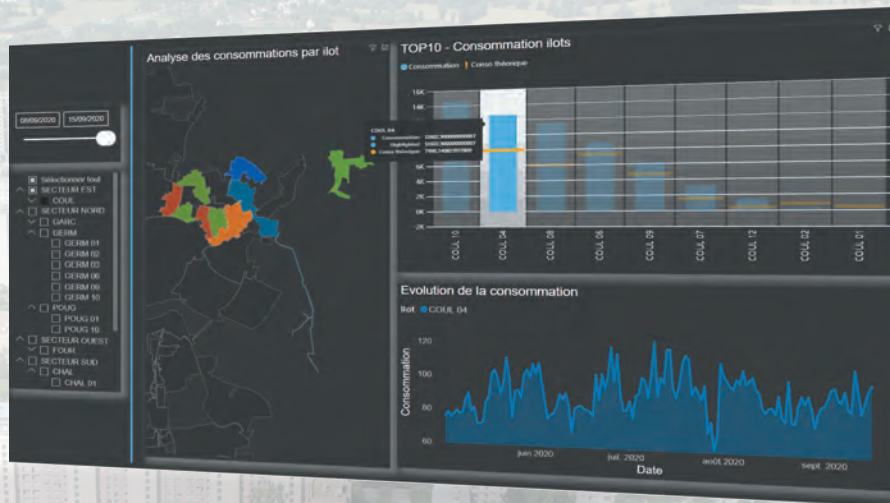
## NETWORK MANAGEMENT

### SOFREL PCWin2



SQL  
Webservices  
FTP





## SQL INTERFACE



- **Extraction of archived data** by an external application, using SQL queries
- **Information accessible** in different lists:
  - List of **stations** managed by PCWin2
  - List of **station data** and its characteristics
  - List of **stored files** for a list of station information over a time interval (start, end)
  - List of **alarm log** records over a time interval

## OPERATIONAL PERFORMANCE

### Hypervision



### Data Analytics



## SMART CITIES

### Big Data



## “WEB SERVICES” INTERFACE



- **Consultation and management** of current values
- **Reading** the following information:
  - List of configured **stations** and their data
  - Current values of a **data list**
  - Current values of an **operational parameter**
  - List of **alarms** present
- **Write** access to:
  - Current values of an output **information list**
  - Alarm **acknowledgement**

# SOFREL FR400: communication front-end processor FOR EQUIPMENT NETWORK AND SOFREL TELEMETRY AND SCADA



The SOFREL FR4000 front-end processor facilitates the **management of communication media** and allows for the implementation of **data sharing** between several SCADA System.

Compatible with all SOFREL telemetry equipment, this front-end processor retransmits all or part of the analogue and IP communications it receives to relay them via **a single IP interface** to the supervisors attached to it.

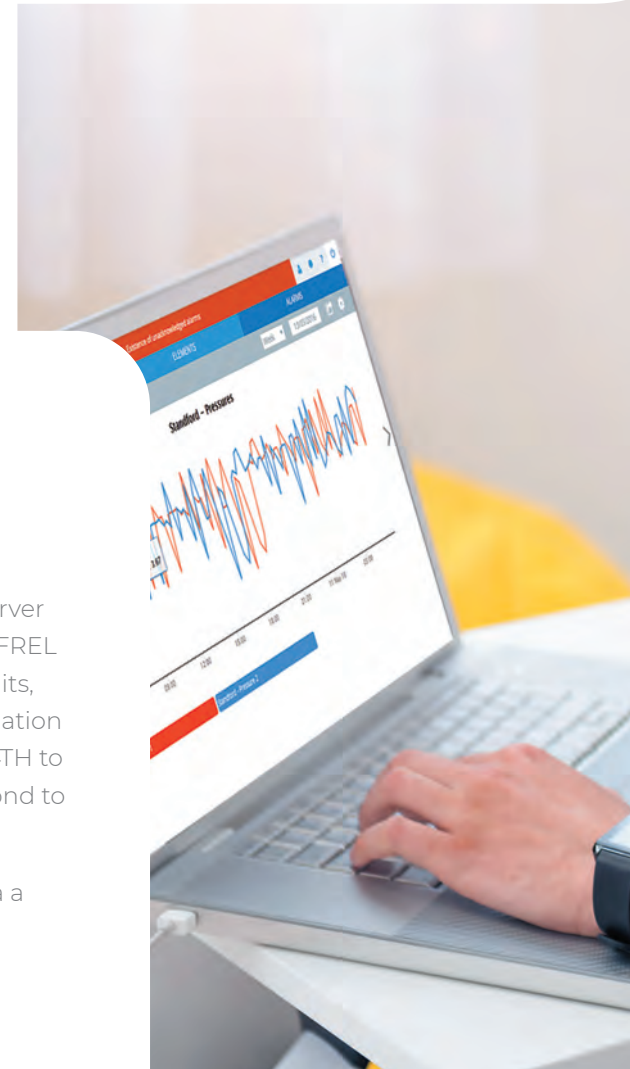
SOFREL FR4000 also manages all **communications initiated by supervision** wishing to query a remote terminal unit to retrieve the data and position a new instruction or operating parameter for it.

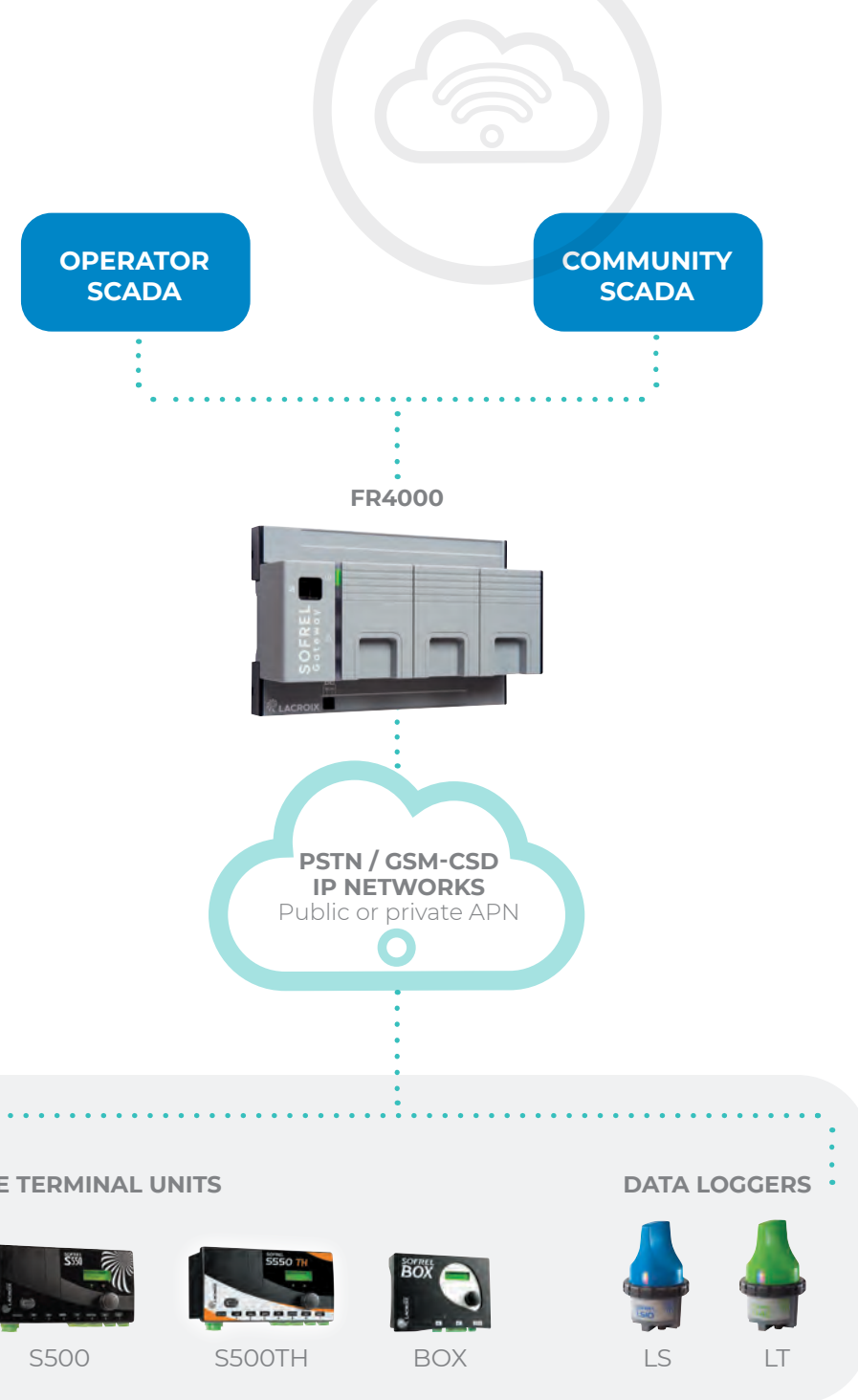
## PRODUCT BENEFITS

- Compatibility with all SOFREL telemetry equipment
- Possible interface with 4 SCADA system
- Scaled to manage up to 500 remote terminal units and a unlimited number of data loggers
- Management of the dual communication system with the remote terminal units
- Definition of functional rights for each connected SCADA system
- Ability to remotely modify a data logger configuration

Compatible with the SOFREL SG4000 server for the installation of **VPN tunnels** to SOFREL S500, S4W and S4TH remote terminal units, SOFREL FR4000 also supports the installation of **certificates** with SOFREL S4W and S4TH to authenticate communications and respond to **cyber security** issues.

The front-end processor is configured via a secure WEB interface.





CONNECTED  
TECHNOLOGIES  
FOR **SMARTER**  
**WATER** &  
**ENERGY**



LACROIX - **Environment**

2, Rue du Plessis

35770 Vern-sur-Seiche · France

Tel : +33 (0)2 99 04 89 00

[info.environment.fr@lacroix.group](mailto:info.environment.fr@lacroix.group)

[www.lacroix-environment.com](http://www.lacroix-environment.com)