

# Solutions for Energy Efficiency



Sofrel  
**LACROIX**

# SOFREL Remote Management: Solutions for energy management

## YOUR INSTALLATIONS

- Central Heating plants,
- Heating district substations,
- Boilers rooms (communal buildings, schools, sports complexes, housing, etc.),
- Domestic hot water production,
- Air handling units,
- Wind farms,
- Photovoltaic power plants,
- Biogas and natural gas cogeneration power plants...

## YOUR NEEDS

- Operate and control your installations remotely,
- Be alerted 24/7 of any malfunctions,
- Exercise constant oversight of all your works,
- Communicate with most of controllers and meters on the market,
- Reduce energy bills,
- Manage building occupancies,
- Regulate boilers and heating circuits,
- Calculate energy produced,
- Create consumption reports and assessments..

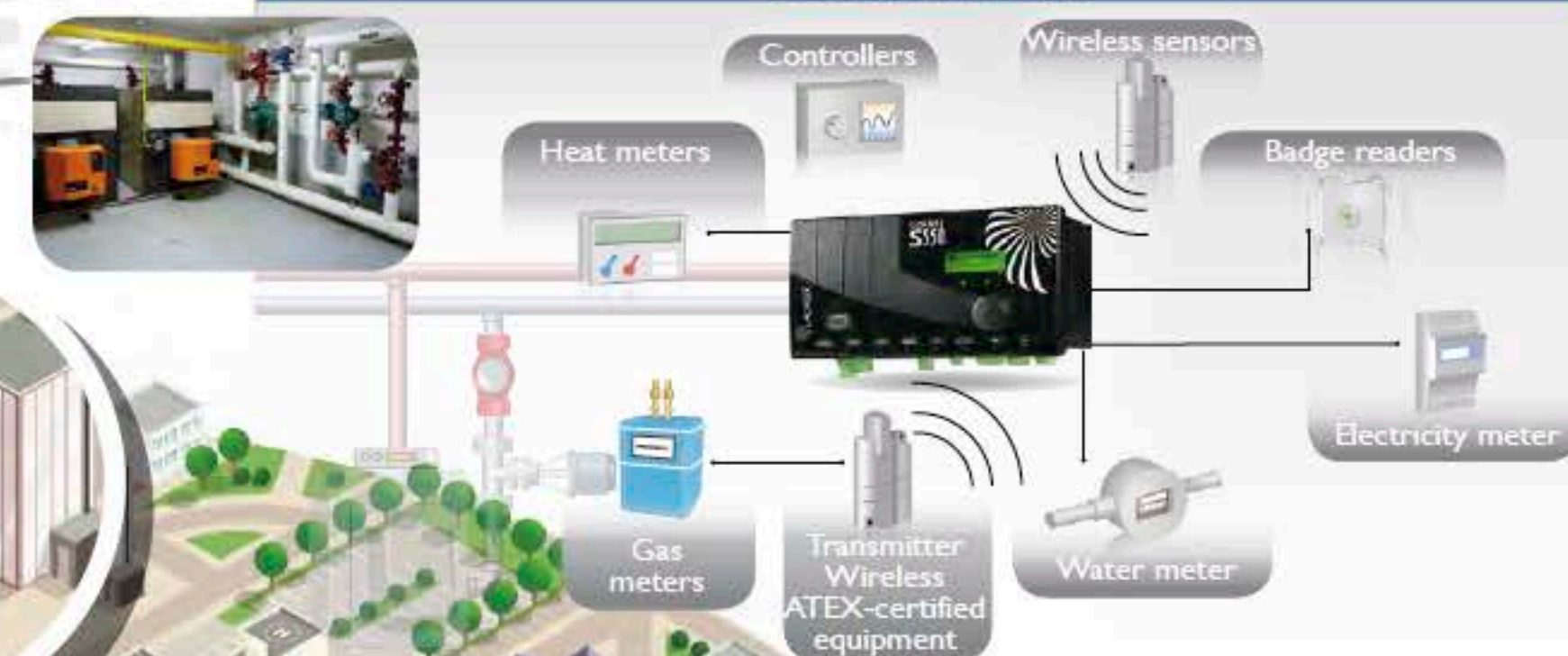


# Control and manage your installations remotely

## CENTRAL HEATING PLANT



## BOILER ROOM



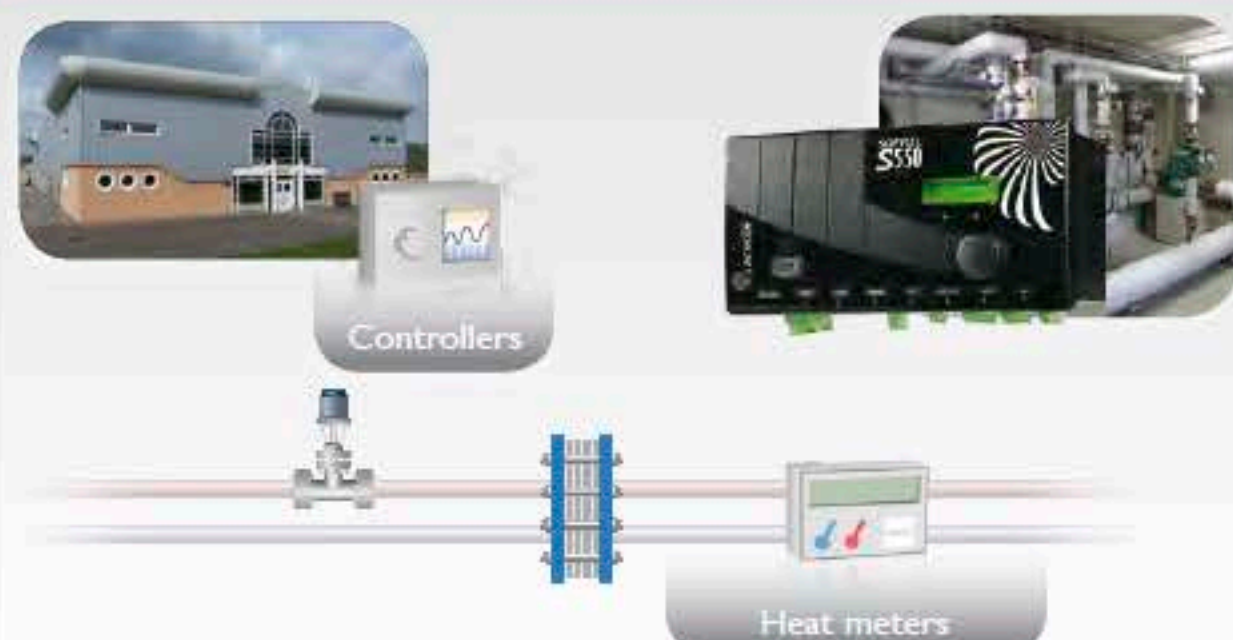
## Control Features

- Intuitive Programming
- Languages - FBD (Functional, Block, Diagram) and ST (Structural Text)
- Supplying a library of heating process blocks
- Management of yearly scheduling

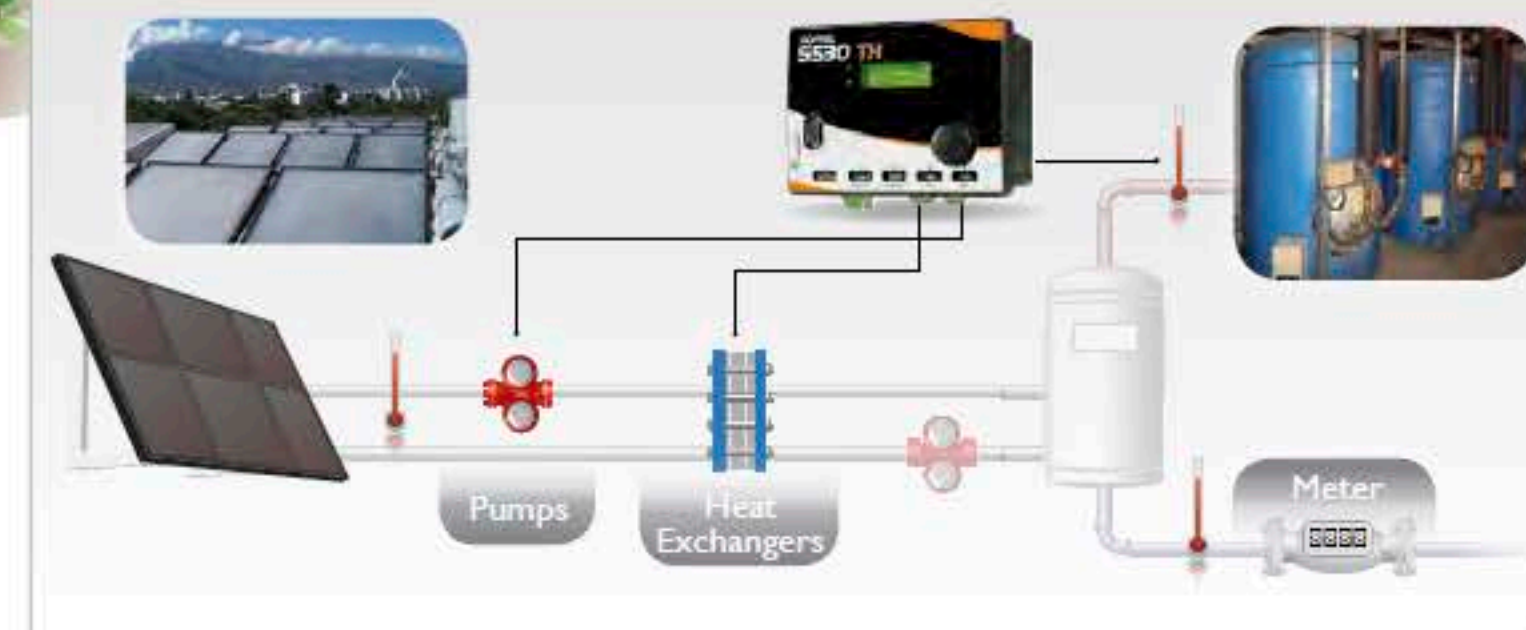
## Unifying Features

- Communications with:
  - PLC and boiler controllers
  - Electricity, gas, and heat meters
- Wireless transmitter reader (meters, temperatures, etc.)
- Compatibility with most of supervisors

## SUBSTATION

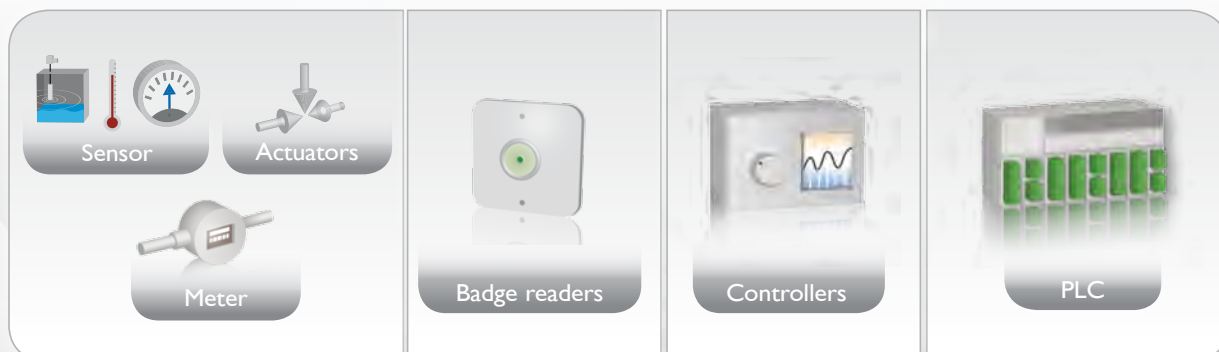


## SOLAR WATER HEATING





# Our LACROIX Sofrel Solutions



Remote Management

Control

Remote Reading

Automation



Alarm alerts



SMS



Email

3G/2G  
GSM/GPRS  
ADSL/RADIO  
PSTN



LACROIX Sofrel Centralisation



SCADA Centralisation clients

The screenshot shows the SCADA Centralisation clients software interface. It displays a data table with various columns and rows. The table includes data for different clients and their associated values.

| Client           | Value | Unit | Value | Unit |
|------------------|-------|------|-------|------|
| 01/01/2012 20:18 | 18    | °C   | 18.00 | °C   |
| 02/01/2012 20:18 | 18    | °C   | 18.00 | °C   |
| 03/01/2012 20:18 | 18    | °C   | 18.00 | °C   |
| 04/01/2012 20:18 | 18    | °C   | 18.00 | °C   |
| 05/01/2012 20:18 | 18    | °C   | 18.00 | °C   |
| 06/01/2012 20:18 | 18    | °C   | 18.00 | °C   |
| 07/01/2012 20:18 | 18    | °C   | 18.00 | °C   |
| 08/01/2012 20:18 | 18    | °C   | 18.00 | °C   |
| 09/01/2012 20:18 | 18    | °C   | 18.00 | °C   |
| 10/01/2012 20:18 | 18    | °C   | 18.00 | °C   |
| 11/01/2012 20:18 | 18    | °C   | 18.00 | °C   |
| 12/01/2012 20:18 | 18    | °C   | 18.00 | °C   |

# SOFREL Remote Management Guarantees



## The reliability of an industry leader

LACROIX Sofrel, subsidiary of the LACROIX group, oversees the design and marketing of telemetry products. With more than 40 years' experience, the company has established itself a lasting reputation as a market leader. Thanks to powerful R&D resources and an extensive technical and commercial network, LACROIX Sofrel combines innovation and industrial capacity with excellent customer service.

Operating nationally and worldwide, the company works closely with its clients in order to offer better products and services. At LACROIX Sofrel, all teams pursue our shared objectives - total quality and continual improvement - with unending dedication and care.

## Ongoing support

To complement its range of remote management products, LACROIX Sofrel remains by its clients' sides for the entire duration of their projects. We provide numerous services, such as the identification and proposal of adapted solutions, training, technical assistance and commissioning, and hotline support.



## A complete range of products

LACROIX Sofrel offers a full range of products for the remote control and management of technical installations: local remote management stations, GSM/GPRS data loggers, central stations, front-end communications, sensors, accessories, and more.



## OUR REFERENCES INCLUDE

### CITIES

|                   |              |
|-------------------|--------------|
| Angoulême,        | Metz,        |
| Antibes,          | Montluçon,   |
| Avignon,          | Montpellier, |
| Béziers,          | Nantes,      |
| Brest,            | Reims,       |
| Clermont-Ferrand, | Rennes,      |
| Gennevilliers,    | Rosny/Bois,  |
| Le Havre,         | Rouen,       |
| Le Mans,          | Thionville,  |
| Limoges,          | Toulouse,    |
| Marseille,        | Vannes...    |

### DEPARTMENTAL COUNCILS

|                |                      |
|----------------|----------------------|
| Calvados,      | Loir-et-Cher,        |
| Cher,          | Mayenne,             |
| Côtes d'Armor, | Oise,                |
| Eure-et-Loir,  | Seine Saint-Denis... |

### PUBLIC HOUSING OFFICES

|                     |                 |
|---------------------|-----------------|
| Effort Rémois (51), | Orne Habitat,   |
| Mayenne Habitat,    | Paris Habitat,  |
| Moselis (57),       | Rennes Habitat, |
| OPAC 55,            | SIDR 974,       |
| OPAC 60,            | Vilogia 59...   |
| OPAC 81,            |                 |

### DISTRICT HEATING

|                  |                 |
|------------------|-----------------|
| Angers, Arcueil, | Massy,          |
| Bagnolet,        | Meudon, Nantes, |
| Blagnac,         | Nice, Rennes,   |
| Bourges,         | Saint-Dié,      |
| Castres,         | Soissons,       |
| Chartres,        | Strasbourg,     |
| Châteaudun,      | Toulouse, Toul, |
| Compiègne,       | SYDED 46,       |
| CPCU, Dole,      | Vitry/Seine,    |
| Epinal, Evry,    | Versailles...   |
| Franconville,    |                 |
| Maromme,         |                 |



Sofrel  
**LACROIX**

2, rue du Plessis - 35770 Vern-sur-Seiche - France  
Tél.: +33 (0)2 99 04 89 00 - Fax: +33 (0)2 99 04 89 01

E-mail: [lacroix-sofrel.fr@sofrel.com](mailto:lacroix-sofrel.fr@sofrel.com) - Website: [www.lacroix-sofrel.com](http://www.lacroix-sofrel.com)  
LS: [www.ls-leak-detection.com](http://www.ls-leak-detection.com)