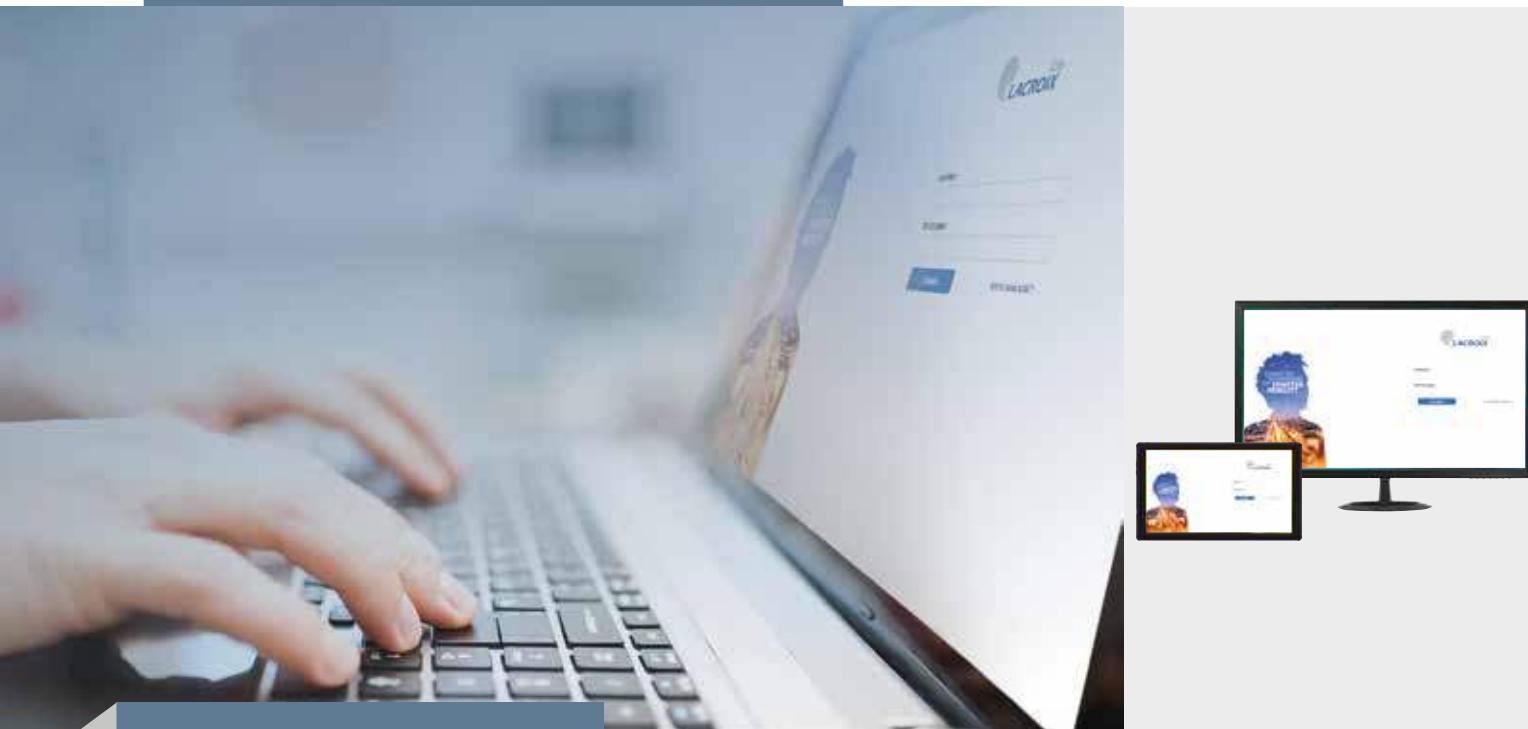




LX Connect for Tegis®



A customer interface, which is accessible online, to manage the control and monitoring of street lighting installations equipped with the Tegis system.

The platform uses Google Maps to display the operating status of the street lighting pool in real time.

Different levels of functions according to needs: Tegis Astroconnect, Lighting or Lighting Plus.

Interfacing with hypervision tools, asset management or CMMS.

LX Connect from LACROIX City makes it possible to combine all the different sectors of a smart city on one online platform.

ADVANTAGES

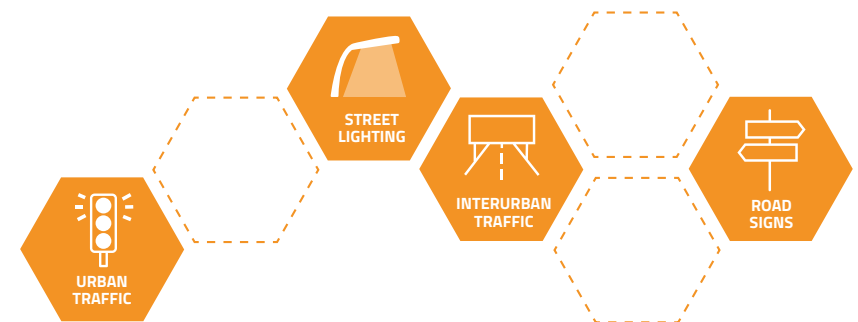
A user-friendly online platform offering automatic access to the latest functions, for simple and secure use 24 hours a day.

Open source and interoperable.

The multi-use LX Connect platform is suitable for all the different sectors of a smart city.

TECHNICAL CHARACTERISTICS

- Secure online access.
- Three levels of access according to the user profile (administrator, operator or technician).
- Google Maps.
- Interfacing with the hypervision tools or the CMMS, through web services.
- Major functions made possible by the interface:
 - Control of lighting.
 - Monitoring of all the equipment.
 - Reports on consumption and faults.
 - Analysis.
 - Overview (dashboard).





Extract from the dashboard
Available with **Tegis Lighting** and **Tegis Lighting Plus**

THE DASHBOARD

It shows the key performance indicators for street lighting in a simple way. This highly powerful tool makes it possible to monitor **the service level, the energy savings achieved** and the characteristics of the installation (number of cabinets, number of light points, etc.).

THE ADVANTAGES:

- Graphic and visual, offering an **overview** of the set-up.
- Easy to configure, offering a clear reading of the performance of the street lighting to **show the results**.
- Easy to share, export in PDF format on 1 page.

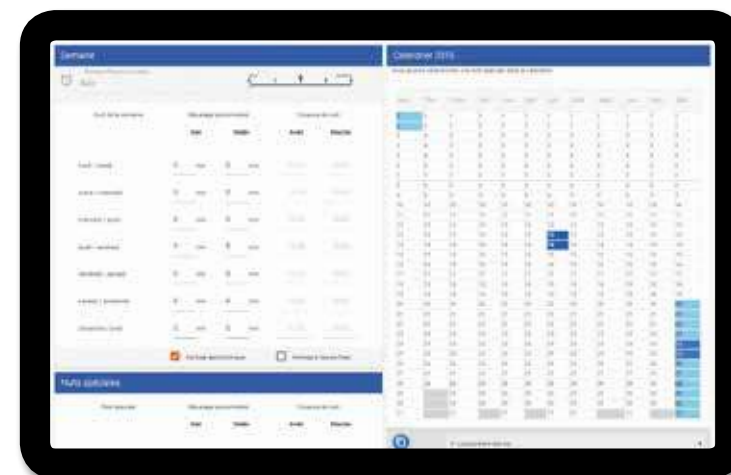
CONTROLLING STREET LIGHTING CABINETS

The first source of savings, controlling re-configurable street lighting remotely, means you do not have to go to each street lighting cabinet to adjust the times at which they turn on and off according to special events.

All of the “street lighting control” functions offered by the 3 Tegis packages: Astroconnect, Lighting or Lighting Plus are available and configurable from the online platform according to your choices and your uses.

THE ADVANTAGES:

- **Remote and unlimited configuration** of the astronomical clock programmes and night cut-outs on the online platform in real time.
- Configuration on an **annual calendar** to create special nights.



Extract from the astronomical clock configuration page
Available with **Tegis Astroconnect**, **Tegis Lighting** and **Tegis Lighting Plus**



LX Connect for Tegis®



Screen shot from the welcome screen showing the status of all the street lighting cabinets
Available with **Tegis Lighting** and **Tegis Lighting Plus**

STREET LIGHTING CABINET MONITORING

Monitoring street lighting cabinets offers an overview of **the operating status of the pool in real time** on a map from Google Maps.

Cabinets with faults are immediately identifiable in a highly visual manner.

At the same time, alerts can be sent by email or text message, with filters that can be configured according to the type of faults.

The components monitored on the LX Connect platform are generally: the main power supply, the public lighting switch, the street lighting outputs, a door opening switch, a surge arrester, etc.

THE ADVANTAGES:

- Up to 22 (2 x 11) additional monitoring inputs on option.
- **Help with fault finding** with the "fault analysis" module that makes it possible to study the distribution of faults on different lines.

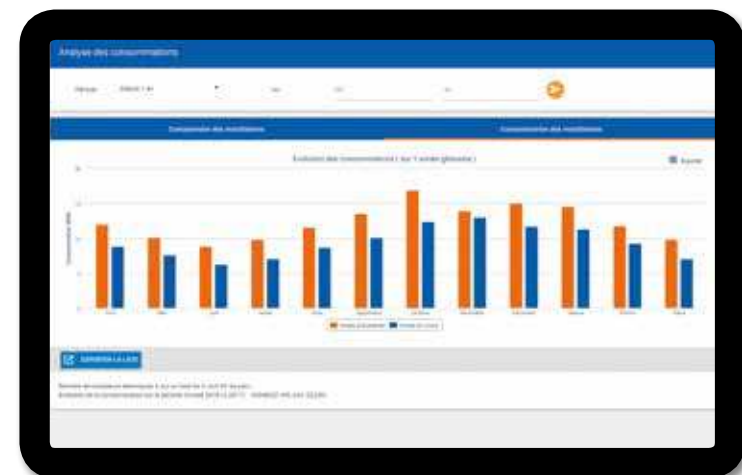
FEEDBACK AND ANALYSIS OF CONSUMPTION OF THE STREET LIGHTING CABINET

The feedback and analysis of consumption data from the cabinet is a real **priority tool for future investments**. You can easily identify the priority areas to renovate, measure the savings achieved by these investments and **show the results**.

Energy consumption with a consumption index, operating times and instantaneous power. Measure the power factor to visualise the ageing of the installations.

THE ADVANTAGES:

- Different levels of analysis with filtering per cabinet or group of cabinets and by period.
- Alerts for anomalies with upper and lower limits to measure and act on discrepancies.
- Displaying the night profile per cabinet to view the savings achieved by the new systems (such as SensyCity detection, Tegis Lighting Plus dimming, etc.).



Extract from the consumption analysis page
Available with **Tegis Lighting** and **Tegis Lighting Plus**



DIMMING AND LIGHT POINT MONITORING

Light point dimming generates up to 60% energy savings for your equipment, by the remote programming of dimming scenarios that can be adapted to every light source or group of light sources.

Monitoring every light source helps optimise the management of street lighting equipment by eliminating night patrols and optimising preventive and curative maintenance interventions.



THE ADVANTAGES:

- Compatible with the SensyCity detection system: dimming can be configured remotely using the LX Connect platform.

A PLATFORM WITH THREE LEVELS OF SECURITY



Cloud security

This layer of security is provided by our service provider that protects the physical resources of the LX Connect environments and guarantees that the infrastructure is a secure place to operate the system. The data are backed-up daily, to ensure their integrity.



Security of the communication layer

All the communications with the different participants and the associated data are encrypted and sent through secure tunnels.



Platform and data security

Access to the platform is protected by three levels of authentication and authorisation (Front end, Back end, SGBD).

Data protection

We have total control over the data throughout the management of their life cycle. Our host is committed to a data management policy that is based on the confidentiality and protection of the data.

The data reported and used on the LX Connect platform remain the customer's property.

