


Driver DL-PAK 70



OPTIMIZE MAINTENANCE AND PERFORMANCE OF YOUR
STREET LIGHTING



When the search for savings leads to performance

Maintenance savings,
energy savings:
the new generation
of LED drivers makes
it possible to both
power new lights and
maintain existing
installations, while
delivering high
performance and true
ease of maintenance.

TODAY'S CHALLENGES

for municipalities,
operators and
installers ...



Taking into consideration the increasing constraints on the operating budgets of urban areas.

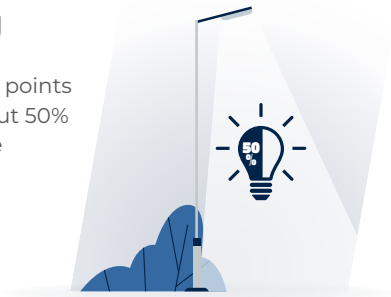


Integrating new maintenance activities.

- ▶ Gradual expiry of manufacturer warranties for LED lights.
- ▶ Managing a wide variety of drivers within installations (size, power, etc.).

Adapting to new usages.

Today, the light points are dimmed about 50% of their used time



Meeting environmental challenges.

Continuing energy-saving efforts.

... ARE SHAPING TOMORROW'S IMPROVEMENTS

for street lighting installations.



Easing maintenance operations.

- ▶ Reducing the number and time of work operations.
- ▶ Spacing out maintenance operations.



Improving performance.

- ▶ Power factor.
- ▶ Efficiency.



The universal solution for powering your outdoor LED lighting

A single LED driver reference, dedicated to new and existing installations, suitable for all types of installation.

- ▶ A 10–700 mA configurable current for a wide power range of 0.25–70 W.
- ▶ Installation at the lamppost base or in light fixtures*.
- ▶ A limited number of references for easier management.



DESIGNED TO LAST!

- ▶ Isolated (SELV).
- ▶ Class-2 compatible.
- ▶ IP65 for durable operation in an outdoor environment.
- ▶ Highly resistant to network disruptions.
- ▶ Lighting stability.
- ▶ Designed for 100,000 hours' operating time.

* Please contact us

Installation in the lamppost base for more efficient maintenance

Optimise the time on your installation and maintenance operations.

**Assembled pre-wired
with junction box**

to ensure a suitable
connection and faster wiring.

**Configuration with
power off.**

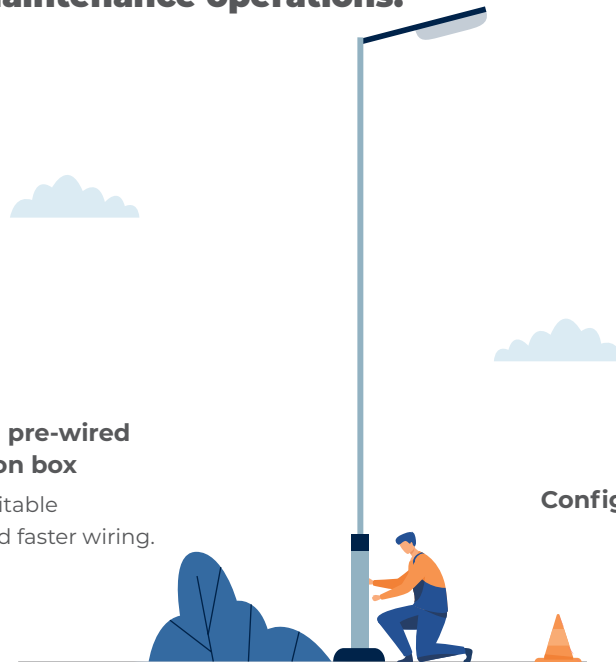
**Maintenance without a lifting platform,
thanks to the lamppost base installation.**

**Flexible
installation.**

**Simple reprogramming from a
smartphone**

thanks to NFC contactless technology.

**Suitable for any type of existing installation, it
is free of the various constraints (dimensional,
supply or obsolescence) of original equipment
drivers thanks to the lamppost base installation.**



High performance

**both dimmed
and on full power**

Across a wide operating range:

- ▶ A stable and efficient power factor.
- ▶ Very high efficiency.

**Innovation recognised and
validated by two patents.**

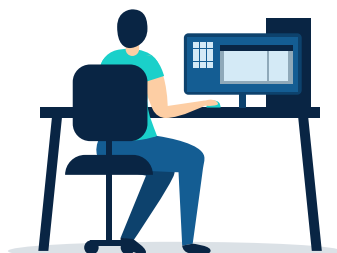


**The DL-Pak 70 driver
is compatible with our
smart management
and sensing solutions.**

Also

**SensyCity®
Tegis®**

Recognised know-how and expertise from LACROIX
City's Street Lighting Business Unit for 20 years.



Eco- designed for a controlled environmental impact

The new generation of the DL-Pak 70 has been developed to limit its energy consumption and environmental impact throughout its life cycle.

▼
A reduction of more than **25%** in the product's mass*.

▼
Standby mode consumption **devided by 7***.

▼
A **41%** reduction in the carbon footprint*.

▼
Improved recyclability **rate** to reach **89%**.



**28.3 kg
CO2
equivalent**

throughout
the product's
lifecycle.

* compared to the previous generation.

Energy savings are immediate

- ▶ Energy performance greater than 91.5%, even at 50% of its load capacity.
- ▶ many dimming options.
- ▶ Consumption in standby mode is very high performance, less than 0.2 W.
- ▶ Number of drivers per output optimised thanks to the low inrush current.

Smart features built into the light point to maximise energy savings.



Integrated self-dimming

Up to six timing transitions per night.
Power levels adjustable from 0% to 100%.
Can filter possible daylight start-ups.



Dimming using the DALI protocol

Suitable for any management mode using the DALI protocol: sensing, smart management, etc.



Dimming/boost using the PILOT function

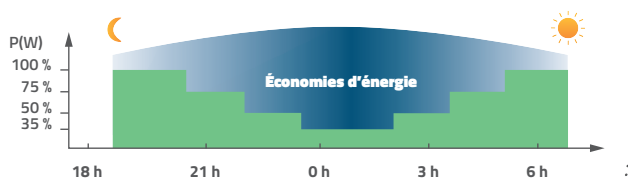
Operation controlled by pilot wire.
Configurable dimming or boost level.

All functions can be easily configured with our MyDL-Pak application.



- ▶ Adapted to operational needs outdoors.
- ▶ Power-off configuration by NFC or with power on using DALI.
- ▶ Tool to help with initial technical light point diagnostics (connections, LED panel, driver, network variation, etc.)

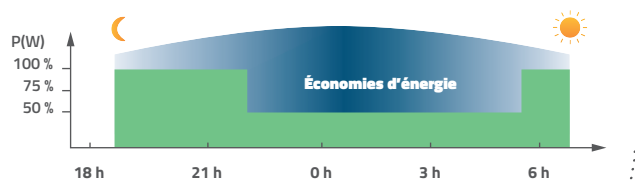
Scheduled for release in 2021.



Dimming via voltage regulator



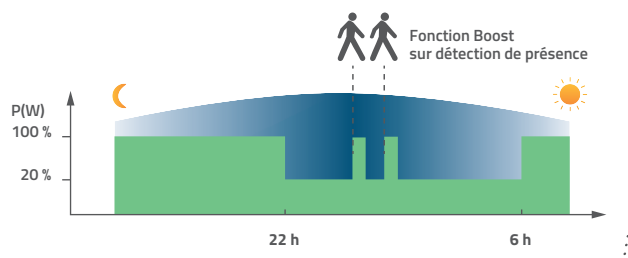
Works with street lighting systems equipped with voltage regulators in electrical cabinets. Dimming activated and controlled by the decrease in grid voltage.



Constant Light Output



Lowers power at the beginning of life of the installation, then increases it up to the end of life to compensate for the loss of flow from the light source.



Power On Level



Lowering (<100%) on installation start-up.

COMPATIBILITY BETWEEN FUNCTIONS

	ITD	DALI	PILOT
ITD		•	•
DALI	•		•
PILOT	•	•	
DIM/V			
CLO	•	•	•
POL	•	•	•

Configurations tailored to your specific needs

Many configurations are possible, including single and double drivers.



DL-Pak Renovation Kit:
a quick and easy
solution to keep your
existing equipment in
optimal condition.

- ▶ Reduced number of control gear references.
- ▶ Easy to implement on any existing installation.
- ▶ Positioned in the base of the lamppost base to facilitate maintenance.

Dimensions

	DL-PAK 70	DL-PAK 70 Lantern
H1	123 mm	123 mm
H2	197 mm	172.5 mm
L	59 mm	59 mm
P	49.5 mm	49.5 mm
E	/	139 mm



DL-Pak 70

SMART FUNCTIONS

Light Source	LED
Type of LED control	Constant current
Dimming functions	ITD, DALI, Pilot, DIM/V
Additional functions	CLO, POL
Configuration	Programmable constant current
	- Power off, contactless NFC, with MyDL-Pak, dedicated application, in factory or on site - Powered, in DALI

TECHNICAL CHARACTERISTICS

Electrical	Power supply	220–240 V/50–60 Hz
	Electrical class	Class-2 compatible, Isolated (SELV)
	Output voltage	18–115 V
	Number of LEDs	6 LED min. ; 34 LED max.
	Output power	0.25–70 W
	Dimming range @ Pmax	0% ; 1,4%...100%
	Output current	10–700 mA
	Performance @ Pmax/50% Pmax/25% Pmax	≥92.5%/≥91.5%/≥88%
	Power factor @Pmax/22% Pmax/13% Pmax	>0.99/≥0.95/≥0.9
	Inrush current/Pulse time	20 A/400 μs
	Number of drivers per output (protection by DPN 16 A curve b)	Up to 17 DL-Pak 70 drivers
	Consumption in standby mode – dimming at 0%	<0.2W
	Immunity to overvoltages (differential mode)	7 kV
	Immunity to overvoltages (common mode)	7 kV
Mechanical	Casing	Self-extinguishing PC
	IK (EN 62262)	IK08
	IP (EN 60529)	IP65
	Max. distance from the light source	15 m
	Weight	580 g
	Dimensions	see opposite
Estimated lifetime		100,000 hours at Tc <68°C (90%)
Environment	Ambient temperature	-25°C +60°C
	Humidity	10–95 %
Certification	CE	
	ENEC	
	SELV	
Product standards	EN61347-1/EN61347-2-13	
	EN62384	
	EN61547	
	EN55015/EN61000-3-2/EN61000-3-3	
Warranty period		5 years



LACROIX - **Environment Smart Lighting**

1, rue de Maupas

69380 Les Chères . France

Tél : +33 (0)4 78 47 33 55

info.eclairage-public@lacroix.group

www.lacroix-environment.com

CONNECTED
TECHNOLOGIES
FOR **SMARTER**
WATER &
ENERGY



Paper from sustainably
managed forests.