

# Driver DL-PAK 70



OPTIMIZE MAINTENANCE AND PERFORMANCE OF YOUR  
STREET LIGHTING

# When the search for savings leads to performance

Maintenance savings, energy savings: the new generation of LED drivers makes it possible to both power new lights and maintain existing installations, while delivering high performance and true ease of maintenance.



**TODAY'S CHALLENGES**  
for municipalities,  
operators and  
installers



**Taking** into consideration the increasing constraints on the operating budgets of urban areas.



**Integrating** new maintenance activities.

- ▶ Gradual expiry of manufacturer warranties for LED lights.
- ▶ Managing a wide variety of drivers within installations (size, power, etc.).

**Adapting** to new usages.

Today, the light points are dimmed about 50% of their used time

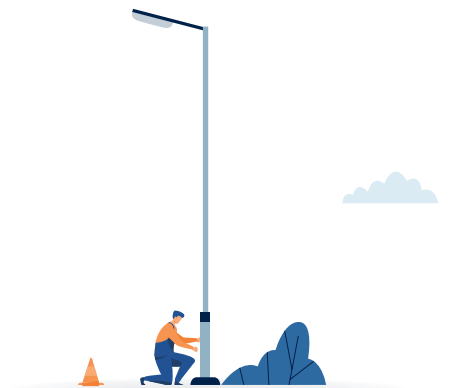


**Meeting** environmental challenges.

**Continuing** energy-saving efforts.



...  
**ARE SHAPING TOMORROW'S IMPROVEMENTS**  
for street lighting installations.



**Easing** maintenance operations.

- ▶ Reducing the number and time of work operations.
- ▶ Spacing out maintenance operations.



**Improving** performance.

- ▶ Power factor.
- ▶ Efficiency.



# The universal solution for powering your outdoor LED lighting

**A single LED driver reference, dedicated to new and existing installations, suitable for all types of installation.**

- ▶ A 10–700 mA configurable current for a wide power range of 0.25–70 W.
- ▶ Installation at the lamppost base or in light fixtures\*.
- ▶ A limited number of references for easier management.



## DESIGNED TO LAST!

- ▶ Isolated (SELV).
- ▶ Class-2 compatible.
- ▶ IP65 for durable operation in an outdoor environment.
- ▶ Highly resistant to network disruptions.
- ▶ Lighting stability.
- ▶ Designed for 100,000 hours' operating time.

\* Please contact us

# Installation in the lamppost base for more efficient maintenance

**Optimise the time on your installation and maintenance operations.**

## Assembled pre-wired with junction box

to ensure a suitable connection and faster wiring.

## Configuration with power off.

**Maintenance without a lifting platform,  
thanks to the lamppost base installation.**

**Flexible  
installation.**

**Simple reprogramming from a  
smartphone**  
thanks to NFC contactless technology.

Suitable for any type of existing installation, it is free of the various constraints (dimensional, supply or obsolescence) of original equipment drivers thanks to the lamppost base installation.



# High performance

**both dimmed and on full power**

## Across a wide operating range:

- ▶ A stable and efficient power factor.
- ▶ Very high efficiency.

**Innovation recognised and validated by two patents.**

**Also**

**The DL-Pak 70 driver is compatible with our smart management and sensing solutions.**

**SensyCity<sup>®</sup>**  
**Tegis<sup>®</sup>**

Recognised know-how and expertise from LACROIX City's Street Lighting Business Unit for 20 years.



# Eco-designed for a controlled environmental impact

**The new generation of the DL-Pak 70 has been developed to limit its energy consumption and environmental impact throughout its life cycle.**

▼  
A reduction of more than **25%** in the product's mass\*.

▼  
Standby mode consumption **devided by 7\***.

▼  
A **41%** reduction in the carbon footprint\*.

▼  
Improved recyclability rate to reach **89%**.



**28.3 kg CO2 equivalent**

throughout the product's lifecycle.

\* compared to the previous generation.



# Energy savings are immediate

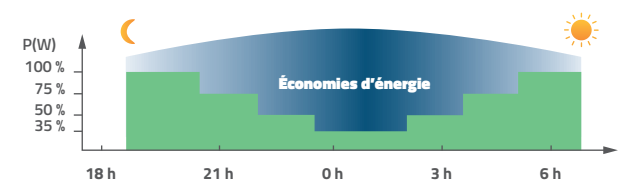
- ▶ Energy performance greater than 91.5%, even at 50% of its load capacity.
- ▶ many dimming options.
- ▶ Consumption in standby mode is very high performance, less than 0.2 W.
- ▶ Number of drivers per output optimised thanks to the low inrush current.

Smart features built into the light point to maximise energy savings.



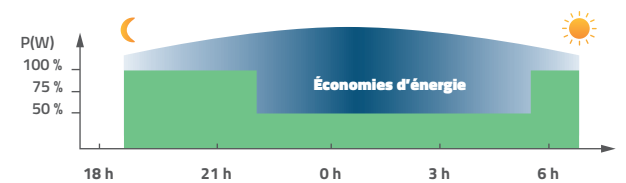
## Integrated self-dimming

Up to six timing transitions per night. Power levels adjustable from 0% to 100%. Can filter possible daylight start-ups.



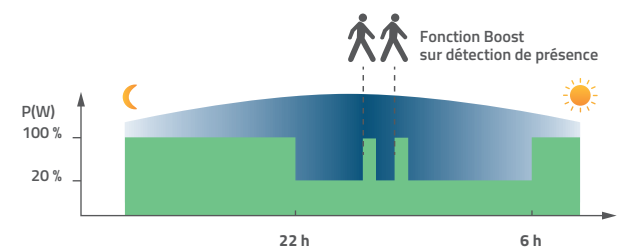
## Dimming using the DALI protocol

Suitable for any management mode using the DALI protocol: sensing, smart management, etc.



## Dimming/boost using the PILOT function

Operation controlled by pilot wire. Configurable dimming or boost level.



## Dimming via voltage regulator



Works with street lighting systems equipped with voltage regulators in electrical cabinets. Dimming activated and controlled by the decrease in grid voltage.

## Constant Light Output



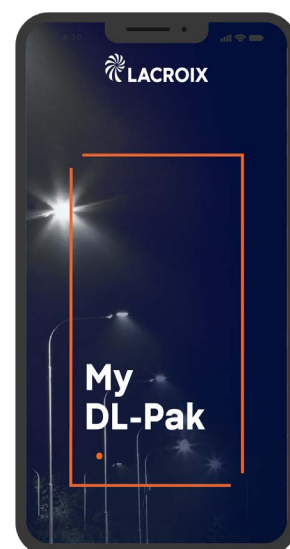
Lowers power at the beginning of life of the installation, then increases it up to the end of life to compensate for the loss of flow from the light source.

## Power On Level



Lowering (<100%) on installation start-up.

All functions can be easily configured with our MyDL-Pak application.



- ▶ Adapted to operational needs outdoors.
- ▶ Power-off configuration by NFC or with power on using DALI.
- ▶ Tool to help with initial technical light point diagnostics (connections, LED panel, driver, network variation, etc.)

Scheduled for release in 2021.

## COMPATIBILITY BETWEEN FUNCTIONS

	ITD	DALI	PILOT
ITD		•	•
DALI	•		•
PILOT	•	•	
DIM/V			
CLO	•	•	•
POL	•	•	•



# Configurations tailored to your specific needs

Many configurations are possible, including single and double drivers.

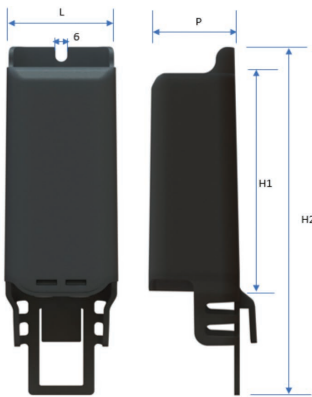


**DL-Pak Renovation Kit:**  
a quick and easy  
solution to keep your  
existing equipment in  
optimal condition.

- ▶ Reduced number of control gear references.
- ▶ Easy to implement on any existing installation.
- ▶ Positioned in the base of the lamppost base to facilitate maintenance.

## Dimensions

	DL-PAK 70	DL-PAK 70 Lantern
H1	123 mm	123 mm
H2	197 mm	172.5 mm
L	59 mm	59 mm
P	49.5 mm	49.5 mm
E	/	139 mm



## DL-Pak 70

### SMART FUNCTIONS

Light Source	LED
Type of LED control	Constant current
Dimming functions	ITD, DALI, Pilot, DIM/V
Additional functions	CLO, POL
Configuration	Programmable constant current - Power off, contactless NFC, with MyDL-Pak, dedicated application, in factory or on site - Powered, in DALI

### TECHNICAL CHARACTERISTICS

Electrical	Power supply	220-240 V/50-60 Hz
	Electrical class	Class-2 compatible, Isolated (SELV)
	Output voltage	18-115 V
	Number of LEDs	6 LED min. ; 34 LED max.
	Output power	0.25-70 W
	Dimming range @ Pmax	0% ; 1,4%...100%
	Output current	10-700 mA
	Performance @ Pmax/50% Pmax/25% Pmax	≥92.5%/≥91.5%/≥88%
	Power factor @Pmax/22% Pmax/13% Pmax	>0.99/≥0.95/≥0.9
	Inrush current/Pulse time	20 A/400 μs
	Number of drivers per output (protection by DPN 16 A curve b)	Up to 17 DL-Pak 70 drivers
	Consumption in standby mode – dimming at 0%	<0.2W
	Immunity to overvoltages (differential mode)	7 kV
Mechanical	Immunity to overvoltages (common mode)	7 kV
	Casing	Self-extinguishing PC
	IK (EN 62262)	IK08
	IP (EN 60529)	IP65
	Max. distance from the light source	15 m
Estimated lifetime	Weight	580 g
	Dimensions	see opposite
	Estimated lifetime	100,000 hours at Tc <68°C (90%)
Environment	Ambient temperature	-25°C +60°C
	Humidity	10-95 %
Certification		CE
		ENEC
		SELV
Product standards		EN61347-1/EN61347-2-13
		EN62384
		EN61547
		EN55015/EN61000-3-2/EN61000-3-3
Warranty period		5 years



LACROIX - City Street Lighting BU

1 rue de Maupas

69380 Les Chères . France

Tél : +33 (0)4 78 47 33 55

info.eclairage-public@lacroix.group

[www.lacroixgroup.com](http://www.lacroixgroup.com)

CONNECTED  
TECHNOLOGIES  
FOR **SMARTER**  
**MOBILITY**



Paper from sustainably  
managed forests.