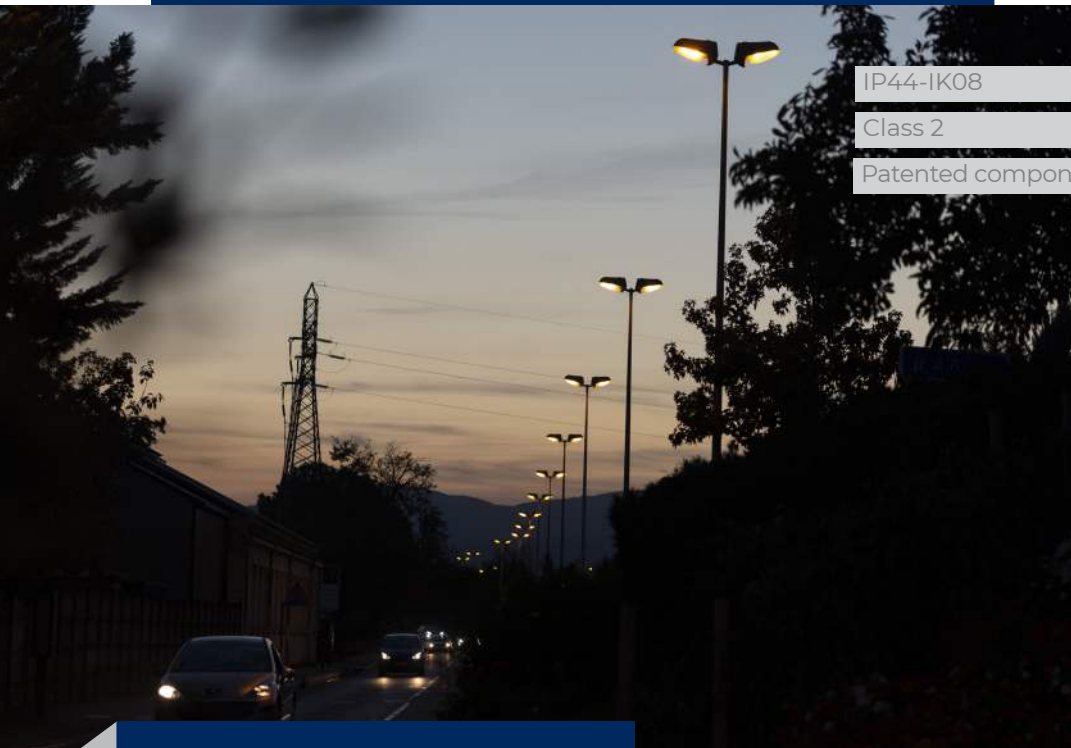




Europak



IP44-IK08

Class 2

Patented components



The lamppost junction box with **the largest capacity** (4 zones), specially designed for Smart Lighting, for posts with a min. inner diameter of 122mm⁽¹⁾.

Europak can connect up to 3 x 35mm² network cables and 5 lighting fixture cables (via the top).

An exclusive interface area to facilitate the connection of Smart City devices.

Patented hook system for DIN rails and terminals block: a unique modular design to adapt configurations and so answering numerous implementation needs.

Open sides and stiffened back to facilitate connection.

Low cover easily fitted for secure maintenance of the connections.

Protective flexible cone, for the frontal insertion of power cables.

(1) For vertical rail (rail-C): min. int. Ø 124mm and inscribed square.

ADVANTAGES

The largest capacity on the market: 4 zones to facilitate the connection of Smart City devices.

Simple installation and maintenance: long high transparent cover for optimal view and direct access to protections. Central locking by 1/4 turn captive screw.

A modular and scalable junction box:

up to 3 adjustable DIN rails and a removable terminal block support that can be adjusted in height without tools (patented system).

TECHNICAL CHARACTERISTICS

Max capacity

- Up to 3 network cables 5G35mm².
- Up to 5 lighting fixture cables (via the top), 3G2.5mm² rigid.

Envelope

- Self-extinguishing polycarbonate.
- IP44⁽²⁾ in accordance with IEC 60529 (open junction box: IP2X).
- IK08 in accordance with EN 62262.
- Class 2 (can also be supplied with insulated earth terminal).
- -40°C to +130°C.

Product standards

- EN 61439-2.

Installation standards

- NF C17-200 and associated guides.

(2) Once installed in the lamppost.

Standard colour

- Other colours : please consult us.
- Available in transparent version.

Mounting

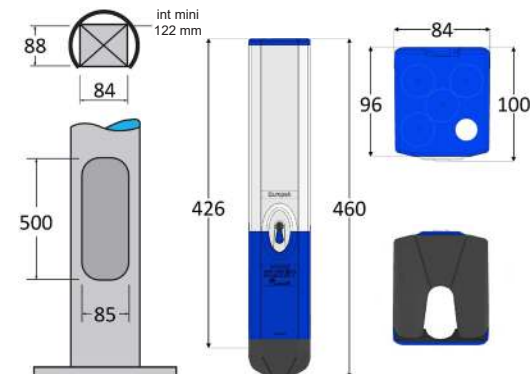
- Fixing bracket 1 hook.
- Possible vertical rail mounting with M6 screws.

Optional

- Terminal block : marking of the terminals to facilitate maintenance.

Delivery

- Pre-wired with high-temperature silicone coated wires and crimped lugs.
- Supplied with configuration labels and cable clamp.



LIGHTING FIXTURE OUTPUT CABLES

Via the bottom (standard) or top (optional).



Main configurations

	Standard	Options	
		TET	Cable glands
Via the BOTTOM	Possible*	-	-
Via the TOP	1 cable (7 to 10mm - TET 7/10)	5 cables (7 to 10mm - 5xTET 7/10)	5 cables (6 to 12mm - 5xM20)
		5 cables (10 to 14mm - 5xTET 10/14)	1 cable (9 to 17mm - 1xM25)

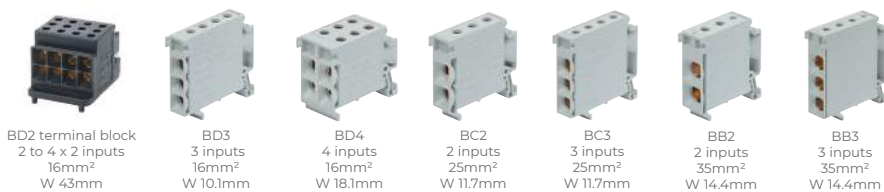
*According to configurations.

INTERMEDIATE ZONE - Max. combinaisons recommended

Max. number of modules in protection zone (W = 18mm)	Bottom module only
	4
	Top module only
	4

Usable width of the intermediate zone : 78mm.

CONNECTION - Integrated terminals and terminal blocks (non-exhaustive list)



Main max. configuration

	≤ 16mm ²	≤ 25mm ²	≤ 35mm ²
2 network cables	5 BD2 terminals max.	5 BC2 terminals max.	5 BB3 terminals max.
3 network cables	5 BD3 terminals max.	5 BC3 terminals max.	5 BB3 terminals max.*

Usable width of the connection zone : 78mm.

Sogexi® > Lamppost base junction boxes > Europak

PROTECTIONS & DEVICES - Max. volume available (mm) : W 78 x D75*



Max. number of modules in protection zone (W = 18mm)	Bottom module only
	4
	Top module only
	4

Usable width of the protection zone : 78mm

*The maximum height depends on the number of DIN rails and the selected configuration.

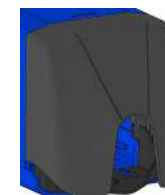
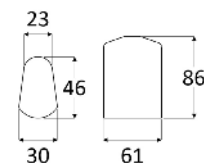
INTERFACE ZONE - Available for connection devices



Max. number of devices : depending on the configurations and elements to be connected - Consult us

Usable width of the interface zone : 74mm.

NETWORK CABLES



Main max. configurations

	4x 16mm ²	5G 16mm ²	4x 25mm ²	5G 25mm ²	4x 35mm ²	5G 35mm ²
2 cables	●	●	●	●	●	●
3 cables	●	●	●	●	●	●

*Limit configurations : tight wiring.