



JUNCTION BOXES



IP44-IK08

Class 2

Patented components

ADVANTAGES

Terminal block support can be removed and height adjusted (two position levels), for easy connection and quick maintenance on site.

Transparent top cover to view and access protective devices. Central locking by ¼ turn captive screw.

Fixing bracket, tool-free adjustment over 110mm, with front or rear hooking.

TECHNICAL CHARACTERISTICS

Max. capacity

- Up to 2 network cables, 4 x 25mm².
- Up to 3 x 5G16mm² network cables.
- Up to 2 x 3G2.5mm² lighting fixture cables.

Casing

- Polycarbonate, self-extinguishing.
- IP44 in accordance with IEC 60529 (open junction box: IP2X).
- IK08 in accordance with EN 62262.
- Class 2.
- -40°C to +130°C.

Product standards

- EN 61439-2.

Installation standards

- NF C17-200 and associated guides.

* For vertical rail (rail-C): Min. int. Ø 89mm.

Dynapak



DPB

DPH

Even greater flexibility and ease of installation with the new Dynapak, for posts with a min. inner diameter of 84mm*.

The Dynapak can connect up to 2 x 25mm² network cables or 3 x 16mm² network cables and 2 lighting fixture cable outputs.

Integration of devices such as ADD protection, ST2, remote management, etc.

Open sides and stiffened back to facilitate connection.

Bottom cover easily fitted for secure maintenance of the connections.

Protective flexible cone to allow power cables to be inserted through the front.

Available in 2 versions:
with lamp output via the bottom (DPB) or the top (DPH).

Standard colour

- Please contact us for other colours.

Mounting

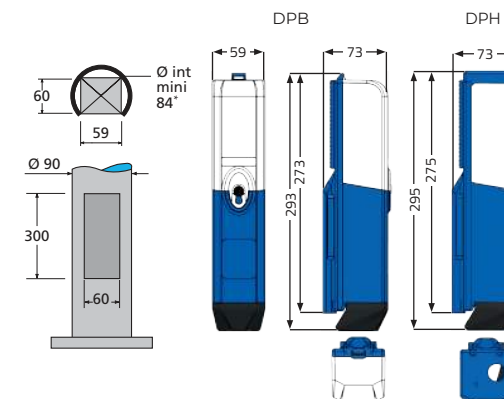
- Fixing bracket 1 or 2 hooks.
- Possible vertical rail mounting with M6 screws.

Optional

- Terminal block: marking of the terminals to facilitate maintenance.

Delivery

- Pre-wired with high-temperature silicone-coated wires and crimped lugs.
- Supplied with cartridge fuses, configuration labels and cable clamp.

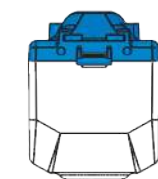


LIGHTING FIXTURE OUTPUT CABLES

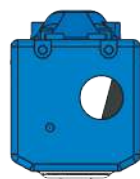
Via the bottom (DPB) or top (DPH).

Main configurations

	Standard	Options	
		TET	Cable glands
Via the BOTTOM (DPB)	2 cables (7 to 14mm)	-	-
Via the TOP (DPH)	1 cable (7 to 10mm - TET 7/10)	2 cables (7 to 10mm - 2 x TET 7/10)	2 cables (6 to 12mm - 2 x M20)
		2 cables (10 to 14mm - 2 x TET 10/14)	1 cable (9 to 17mm - 1 x M25)



DPB
Output at the bottom
of the junction box



DPH
Output at the top
of the junction box

CONNECTION - Integrated terminals and terminal blocks



BE2 terminal block
2 to 4 x 2 inputs, 10mm²
W 37mm



BE3 terminal block
2 to 4 x 3 inputs, 10mm²
W 39mm



BD2 terminal block
2 to 4 x 2 inputs, 16mm²
W 43mm



BD3 terminal block
2 to 4 x 3 inputs, 16mm²
W 43mm



BD2
2 x 16 mm² inputs
W 10.1mm



BD3
3 x 16mm² inputs
W 10.1mm



BD4
4 x 16mm² inputs
W 18.1mm



BC2
2 x 25mm² inputs
W 11.7mm

Main max. configurations

	≤ 16mm ²	≤ 25mm ²
2 network cables	4BD2 terminal block max. or 5 BD2 terminals max.	4 BC2 terminals max.
3 network cables	4BD3 terminal block max. or 5 BD3 terminals max.	-

Usable width of the connection zone: 54mm.

PROTECTIONS & DEVICES - Max. volume available (mm): W 54 x D 48 x H 86



FP, FN
W 18mm



FPN
W 18mm



F2P
W 36mm



PFM
W 18mm



IDIL-10
W 28mm



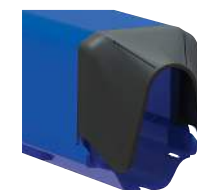
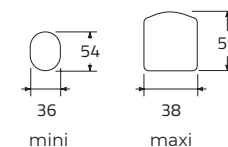
ST2
W 28mm

Max. recommended combinations

		Ø	PFM W 18mm	IDIL W 28mm	ST2 W 28mm
FP or FN	W 18mm	1FP + 1FN	(FP + FN) + 1PFM**	-	-
FPN	W 18mm	3FPN**	2FPN + 1PFM**	1FPN + 1IDIL	1FPN + 1ST2
F2P	W 36mm	1F2P	1F2P + 1PFM**	-	-

Usable width of the protection zone: 54mm.

NETWORK CABLES



Main max. configurations

	4X 10mm ²	5G 10mm ²	4X 16mm ²	5G 16mm ²	4X 25mm ²	5G 25mm ²	Lighting fixture cables
2 cables	●	●	●	●	●*	-	1
2 cables	●	●	●	●	●*	-	2
3 cables	●	●	●	●**	-	-	1
3 cables	●	●	●	●**	-	-	2

*With max. 3G 1.5mm² rigid lighting fixture cable.

** Limit configurations: tight wiring.

