

Tegis®



Smart management ecosystem for street lighting



Guiding local authorities towards responsible and connected lighting



GUARANTEEING... 

MANAGING... 

PREPARING... 



...AN ATTRACTIVE CITY

- Service quality
- Safety
- Comfort and well-being



...YOUR BUDGET

- Maintenance costs
- Energy consumption
- Investment priorities



...FOR THE FUTURE

- Scarcity of energy and increasing associated costs
- Sustainable development of towns
- Interoperability of systems and preparation for new uses

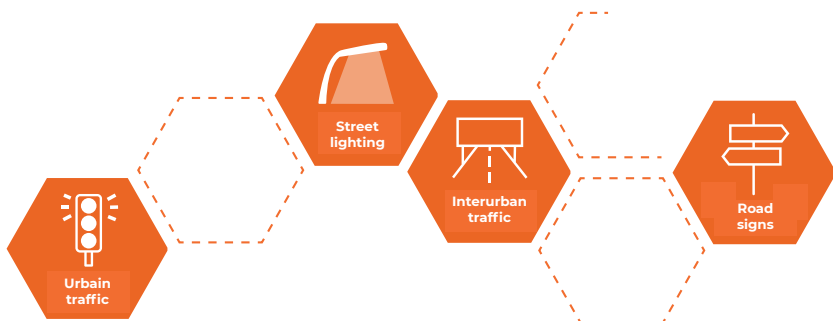
2 500
Connected
PUBLIC LIGHTING
CABINETS

40 000 LIGHT
POINTS managed

In more than
15 COUNTRIES

15 YEARS OF EXPERIENCE
in the field

In more than
100 TOWNS



Tegis: an adaptable smart ecosystem for managing street lighting

Tegis, a modular and **future-proof system** that can be adapted to the needs of the various areas of towns and communities. With Tegis, LACROIX - City is committed to guiding you towards a **smart, connected and attractive** city.



Tegis®

COMPATIBLE
SensyCity®

Tegis® Lighting

Area with **connected management** of street lighting cabinets



Tegis® Astro

Area with **standalone control** of street lighting cabinets



Tegis® Astroconnect

Area with **connected control** of street lighting cabinets



Tegis® Lighting Plus

Area with **connected management** of street lighting cabinets **up to the light points**



Cabinet management: a simple step towards responsible and connected lighting

Tegis®

Tegis® **Astro**



 **Standalone control** of lighting


Tegis® **Astroconnect**





 **Connected control** of lighting

Tegis® **Lighting**



 **Connected control** of lighting

 **Monitoring** of lighting cabinets

 **Feedback and analysis** of consumption

Tegis® **Lighting Plus**



  **Monitoring** of every light points

 **Dimming** of every light points

Energy savings

The control is the first source of energy savings thanks to its local astronomical clock.

Future-Proof

To connected control or management.

Energy savings

The control is the first source of energy savings thanks to its connected astronomical clock.

Maintenance savings

The connected astronomical clock enables remote configuration.

Future-Proof

To complete connected management of the cabinet.

Energy and maintenance savings

The control is the first source of energy savings thanks to its connected astronomical clock that can be configured remotely.

Service quality and safety

Cabinet monitoring and its real-time alert system provide optimised service quality for public lighting equipment.

Budget management

Feedback and analysis of energy consumption to measure energy savings and prioritise investments.

Future-Proof

To entirely connected management of cabinets and light points.

Optimised energy savings

Dimming of the light points is configured remotely for greater flexibility.

Service quality & optimised safety

Monitoring of every light points optimises the management of public lighting equipment in certain areas of the town.

The Tegis cabinet range



COMPATIBLE
SensyCity®

Tegis®

Tegis® **Astro**

Tegis® **Astroconnect**

Tegis® **Lighting**

Future-proof to
the light points



Control unit



Control unit



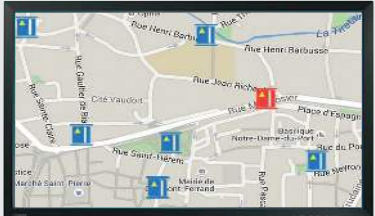
Web platform



Control unit



Web platform - Control, monitoring, metering



 **Standalone control**
of lighting

Synchronised astronomical clock

- > 3 programmable outputs and override night cutouts.
- > In-cabinet reprogramming.
- > Cabinet override.

Future-Proof

 **Connected control**
of lighting

Synchronised astronomical clock

- > 3 programmable outputs and override night cutouts.
- > Remote, real-time reprogramming from the web platform.
- > Cabinet override.

Future-Proof

 **Connected control**
of lighting

Main local control

- > Synchronised astronomical clock.
- > 3 programmable outputs and override night cutouts.
- > Remote forced start-up.
- > Remote, real-time reprogramming from the web platform.

or

Backup local control

- > Astronomical clock to back up external controls in case of failure.

or

Central control

- > The solution for replacing Pulsadis to activate lighting in a community using central information.

 **Monitoring** of the public
lighting cabinet

Real-time alert system

- > Main power supply, public lighting switch, inputs, door opening, etc.
- > Monitoring inputs: 7 on the control unit optional additional inputs (see page 11).
- > Real-time display of equipment status on the web platform.

Monitoring of external lighting controls

- > Ensures safety of public lighting control.

Fault analysis

- > Troubleshooting assistance for your public lighting equipment.

 **Feedback and analysis**
of consumption

Feedback on consumption

- > Energy consumption.
- > Alerts regarding anomalies with upper and lower limits.
- > Power factor measurement.

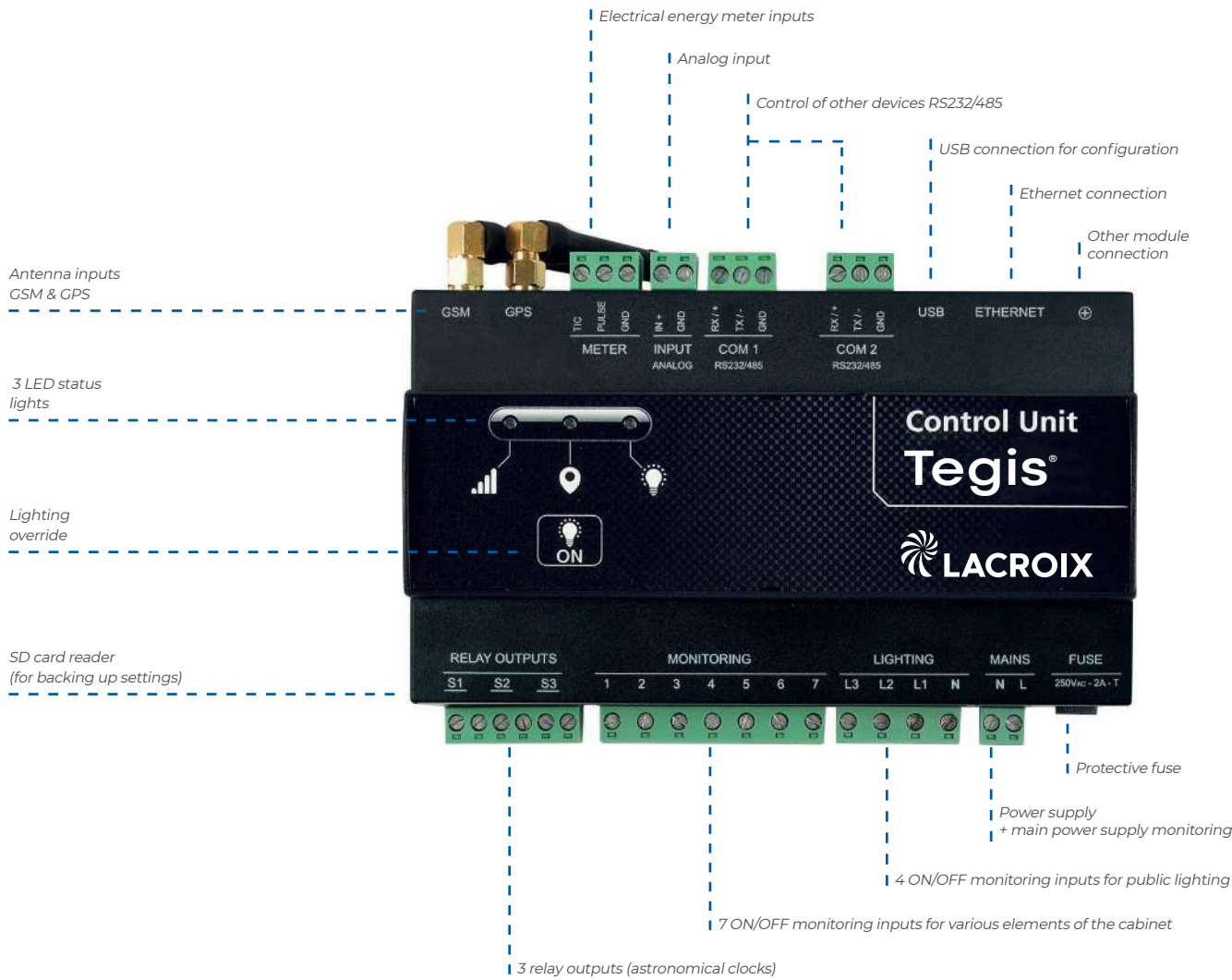
Consumption analysis

- > Measuring savings made.
- > Prioritising future investments.

Technical specifications



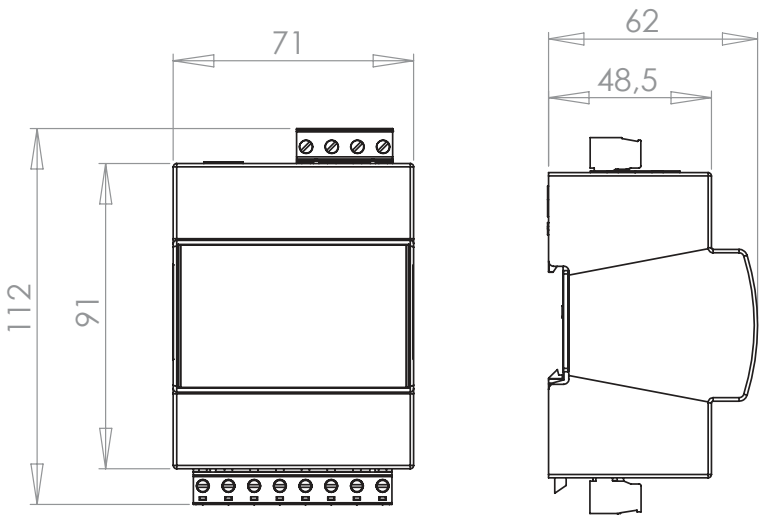
Tegis control unit



Additional Tegis monitoring input modules

This module allows to add monitoring inputs, to monitor more elements in the street lighting cabinet. This module is connected to the \oplus input of the Tegis control unit (other module connection).

Modules contain 11 additional ON/OFF monitoring inputs.



Web platform

User interface accessible online, always up-to-date, for simple and secure use.



City Connect by LACROIX City means different elements of smart cities can be connected on a single web platform, which can interface with external services (mapping, infrastructure, CAMM, other management solutions, etc.)



Environmental protection

Makes it possible to obtain energy savings certificates :

RES-EC-06

> 17 500 kWh cumac x P (saved power in kWh)
Renovation of enhancement illuminations.

RES-EC-07

> 17 500 kWh cumac x N (number of astronomical clocks)
Astronomical clock for street lighting.



Technical characteristics

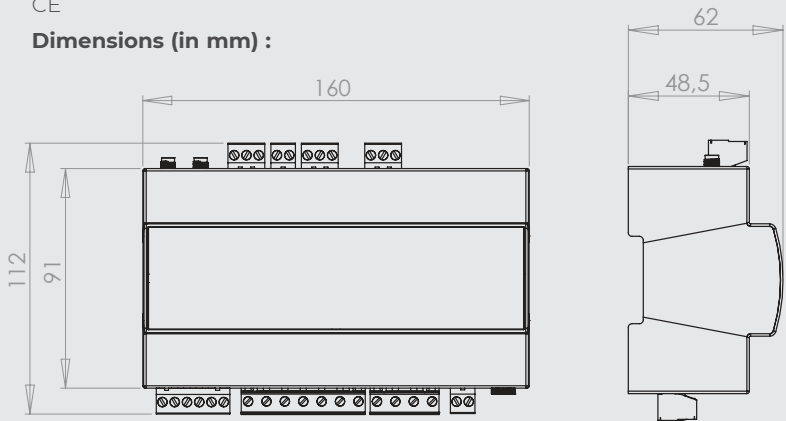
Operating temperatures:
-25°C to +50°C

Operating voltage:
160V to 265 VAc - 50/60 Hz

Communication modem:
integrated - GSM/GPRS

Product standards:
EN 60950-1
EN 61000-2 / 61000-3
EN 55032
EN 55024
EN 301-3 / 301-7 / 301-24 / 301-489 / 301-511 / 301-908
EN 300-440

Certification:
CE
Dimensions (in mm) :





LACROIX - City Street Lighting BU

1 rue de Maupas

69380 les Chères France

Tel : +33 (0)4 78 47 33 55

info.eclairage-public@lacroix.group

www.lacroixgroup.com

CONNECTED
TECHNOLOGIES
FOR **SMARTER**
MOBILITY