

# Surge Protections **SOFREL**

## OVERVOLTAGE PROTECTION DEVICES

Securing the operation of SOFREL remote management equipment



### BENEFITS

- **Highest protection**
  - Surge protection
  - Securing the operation of remote management equipment subject to severe conditions of use
  - Optimum protection of power supplies, modems and inputs
- **Optimal compatibility**
  - Different models to suit all installations :
    - Low-voltage surge arrester 100-240V AC - single phase type 2
    - Telephone line surge protector PSTN
    - Connection lightning arrester RS485/DL
    - Surge arrester 4-20 mA or 13.8V - Remote cards

### PRODUCTS FEATURE

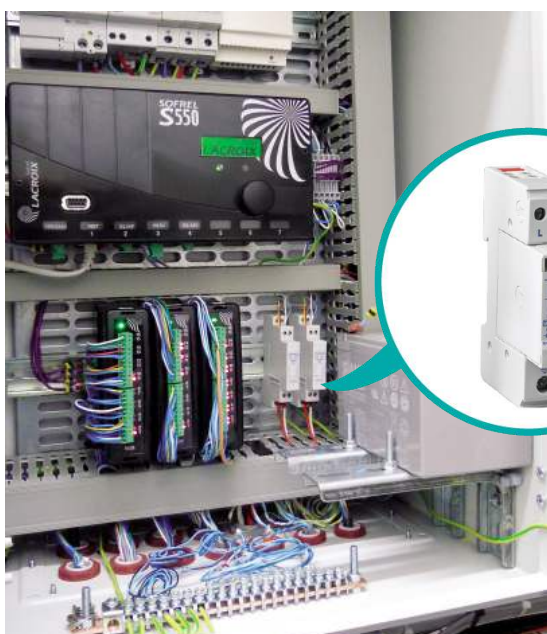
- Rail mounting DIN
- End of life indicator light
- End of life in short-circuit (detection by the absence of communication)
- Common and differential mode protection



### Low-voltage surge arrester 100-240V AC single phase type 2

- Optimum protection of the power supply
- Rail mounting DIN
- End of life indicator light
- Continuity of service at the end of life (Maintained power supply)
- Common and differential mode protection
- Respect of standards EN 61643-11 and IEC 61643-1
- Production ISO 9001

Uc	Imax	In	Up
255V	15kA	5kA	1,5/0,9kV



### Telephone line surge protector PSTN

- Optimum protection of the modem PSTN
- Rail mounting DIN
- End of life in short-circuit (detection by the absence of communication)
- Common and differential mode protection
- Respect of standards EN 61643-21 and IEC 61643-21
- Production ISO 9001

Uc	Imax	In	Up
170V	20kA	5kA	220V



### Connection lightning arrester RS485/DL

- Optimum protection of the modem in LS LP and serial links RS485
- Rail mounting DIN
- End of life in short-circuit (detection by the absence of communication)
- Common and differential mode protection
- Respect of standards EN 61643-21 and IEC 61643-21
- Production ISO 9001

Uc	Imax	In	Up
8V	20kA	5kA	20V



### Surge arrester 4-20 mA or 13.8V Remote cards

- Optimum protection of the analogue inputs 0-20mA and 4-20mA and power supplies for remote cards
- Rail mounting DIN
- End of life indicator light
- Continuity of service at the end of life (Maintained power supply)
- Common and differential mode protection
- Respect of standards EN 61643-21 and IEC 61643-21
- Production ISO 9001

Uc	Imax	In	Up
28V	20kA	5kA	40V



#### Caption

Uc : Maximum tension in steady state  
Imax : Maximum current  
In : Rated discharge current  
Up : Level of protection